

**HAEBERLE**

multifunctional cart systems

## type list

valid up from 1 July 2012

### **toro**

Equipment cart system  
... dimension and power



## Components

- Extremely strong chassis with 4 high-quality, easy-run castors, 125 mm dia. with wall guards and integrated thread guard. 2 castors are lockable. Electrically conductive castors are deliverable on request.
- Precious 2-pillar aluminium profile with cover and integrated cable duct for optimal cable management
- Grey or blue decorative strips
- Strong, hygienic metal shelves with rounded grey decorative corners
- Well-formed drawers with soft self-closing feature and practical grey handle with label window
- Striking grey angular push handles. 2 or 4 push handles can be mounted at the cart
- Cable duct horizontal arm with integrated cable guide for the horizontal laying of up to 6 cables or for a multiple socket outlet
- Pull-out shelf with grey decorative angulars and handle for setting up equipment or keyboard
- Rail for shelf for securing equipment when moving the cart

## Technical details / Dimensions

Cart outer dimensions:	with shelf width 450 mm 701 x 648 x 876 mm (w x d x h) 701 x 648 x 1260 mm (w x d x h) 701 x 648 x 1516 mm (w x d x h)
	with shelf width 630 mm 880 x 648 x 876 mm (w x d x h) 880 x 648 x 1260 mm (w x d x h) 880 x 648 x 1516 mm (w x d x h)
Maximum load:	up to 130 kg (castors dia. 125 mm) up to 250 kg (castors dia. 150 mm)
Carrier columns height:	668 / 1052 / 1308 mm standard
Shelf outer dimensions:	450 x 485 x 30 mm (w x d x h) 630 x 485 x 30 mm (w x d x h)
Shelf load limit:	up to 50 kg per shelf
Pull-out shelves outer dimensions:	450 x 485 x 30 mm (w x d x h) 630 x 485 x 30 mm (w x d x h)
Pull-out shelf load limit:	up to 10 kg
Drawer outer dimensions:	450 x 487 x 125 mm (w x d x h) 630 x 487 x 125 mm (w x d x h)
Drawer load limit:	up to 10 kg
High-quality easy-run castors:	4 castors with wall guards, 2 castors are lockable Dia. 125 mm as standard Dia. 150 mm for an extra charge

## Materials / Colours

Carrier columns:	Anodized aluminium
Cover cap:	ABS plastic, grey (6502B acc. NCS)
Chassis:	Cast aluminium, finely textured, powder-coated, grey (RAL 7012)
Decorative strip colours:	Made of PVC, grey (6502B acc. NCS) or blue (3502B acc. NCS)
Decorative angulars:	ABS, grey (6502B acc. NCS)
Shelves:	Powder-coated steel, grey white (RAL 9002)
Rail for shelves:	Powder-coated tubular steel, whitealuminium (RAL 9006)
Push handle:	Polyamide, grey (6502B acc. NCS)
Drawer handle:	ABS, grey (6502B acc. NCS) with label window
Drawer:	Powder-coated steel housing, grey-white (RAL 9002) Powder-coated aluminium front panel, grey-white (RAL 9002)

**Function carts 45  $\triangle$  shelf width 45 cm / Function carts 63  $\triangle$  shelf width 63 cm**

All listed toro carts are equipped with chassis, 4 castors 125 mm dia. (2 castors are lockable) and wall guards in series. Carts with drawer(s) include grey drawer handle(s) with label window. Angular push handles are extra. Please order separately. The carts shown on the following pages are delivered assembled without surcharge.

## Basic carts / Equipment carts

### toro basic cart



with 2 shelves and 1 drawer. Up to 4 drawers can be retrofitted.

#### 45 cart

Dim.: 701 x 648 x 876 mm (w x d x h)

Decorative strips	Ref. no.
grey	20271
blue	20272
1 pair of angular push handles	20193

#### 63 cart

Dim.: 880 x 648 x 876 mm (w x d x h)

Decorative strips	Ref. no.
grey	20481
blue	20482
1 pair of angular push handles	20193

Single drawer see on page 9.

### toro equipment cart 1

**NEW**



with 3 shelves, 1 drawer, 1 cable duct horizontal.

#### 45 cart

Dim.: 701 x 648 x 1260 mm (w x d x h)

Decorative strips	Ref. no.
grey	20781
blue	20782
1 pair of angular push handles	20193
grey	

#### 63 cart

Dim.: 880 x 648 x 1260 mm (w x d x h)

Decorative strips	Ref. no.
grey	20791
blue	20792
1 pair of angular push handles	20193
grey	

### toro equipment cart 2



with 4 shelves, 1 drawer, 1 cable duct horizontal arm for the optimal management of up to 6 cables.

#### 45 cart

Dim.: 701 x 648 x 1260 mm (w x d x h)

Decorative strips	Ref. no.
grey	20281
blue	20282
1 pair of angular push handles	20193
grey	

#### 63 cart

Dim.: 880 x 880 x 1260 mm (w x d x h)

Decorative strips	Ref. no.
grey	20491
blue	20492
1 pair of angular push handles	20193
grey	

## Computer carts

### toro computer cart 1



with 2 shelves, 1 pull-out shelf for keyboard with extensible mousepad and handle, 1 horizontal arm with TFT mount, 1 PC support for mounting on right or left side. Please specify right or left when ordering!

#### 45 cart

Dim.: 701 x 648 x 1260 mm (w x d x h)

Decorative strips	Ref. no.
grey	20611
blue	20612
1 pair of angular push handles grey	20193

#### 63 cart

Dim.: 880 x 648 x 1260 mm (w x d x h)

Decorative strips	Ref. no.
grey	20751
blue	20752
1 pair of angular push handles grey	20193

### toro computer cart 2



with 2 shelves, 1 pull-out shelf for keyboard with extensible mousepad and handle, 1 cable duct horizontal arm under the upper shelf.

#### 45 cart

Dim.: 701 x 648 x 876 mm (w x d x h)

Decorative strips	Ref. no.
grey	20621
blue	20622
1 pair of angular push handles grey	20193

#### 63 cart

Dim.: 880 x 648 x 876 mm (w x d x h)

Decorative strips	Ref. no.
grey	20571
blue	20572
1 pair of angular push handles grey	20193

### toro computer cart 3

**NEW**



with 2 shelves, 1 pull-out shelf for keyboard with extensible mousepad and handle, 1 cable duct horizontal arm, 1 horizontal arm with alegre monitor holder (load capacity up to 12 kg).

#### 45 cart

Dim.: 701 x 648 x 876 mm (w x d x h)

Decorative strips	Ref. no.
grey	20801
blue	20802
1 pair of angular push handles grey	20193

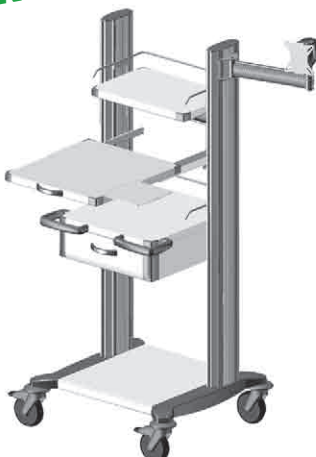
#### 63 cart

Dim.: 880 x 648 x 876 mm (w x d x h)

Decorative strips	Ref. no.
grey	20811
blue	20812
1 pair of angular push handles grey	20193

### toro computer cart 4

**NEW**



with 2 shelves 485 mm deep, 1 shelf 300 mm deep, 1 pull-out shelf for keyboard with extensible mousepad and handle, 1 drawer, 2 rails for shelves, 1 cable duct horizontal arm, 1 alegre monitor holder (load capacity up to 12 kg) on articulated arm with integrated cable guide.

#### 45 cart

Dim.: 701 x 648 x 1516 mm (w x d x h)

Decorative strips	Ref. no.
grey	20821
blue	20822
1 pair of angular push handles grey	20193

#### 63 cart

Dim.: 880 x 648 x 1516 mm (w x d x h)

Decorative strips	Ref. no.
grey	20831
blue	20832
1 pair of angular push handles grey	20193

# Endoscopy carts

## toro endoscopy cart 1



with 5 shelves, 1 drawer, 1 cable duct horizontal arm for the optimal integration of up to 6 cables.

### 45 cart

Dim.: 701 x 648 x 1516 mm (w x d x h)

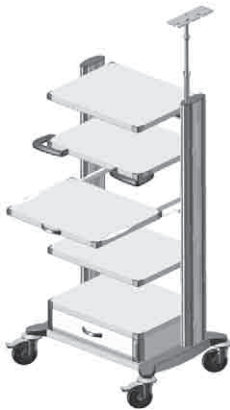
Decorative strips	Ref. no.
grey	20291
blue	20292
1 pair of angular push handles grey	20193

### 63 cart

Dim.: 880 x 648 x 1516 mm (w x d x h)

Decorative strips	Ref. no.
grey	20511
blue	20512
1 pair of angular push handles grey	20193

## toro endoscopy cart 2



with 4 shelves, 1 pull-out shelf for keyboard with extensible mousepad and handle, 1 drawer, 1 cable duct horizontal arm for the optimal integration of up to 6 cables, 1 universal endoscope holder.

### 45 cart

Dim.: 701 x 648 x 1516 mm (w x d x h)

Decorative strips	Ref. no.
grey	20581
blue	20582
1 pair of angular push handles grey	20193

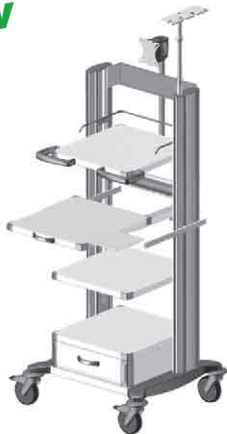
### 63 cart

Dim.: 880 x 648 x 1516 mm (w x d x h)

Decorative strips	Ref. no.
grey	20561
blue	20562
1 pair of angular push handles grey	20193

## toro endoscopy cart 3

**NEW**



with 3 shelves, 1 pull-out shelf for keyboard with extensible mousepad and handle, 1 rail for shelf, 1 drawer, 1 cable duct horizontal arm for the optimal integration of up to 6 cables, 1 horizontal arm with alegro monitor holder (load capacity up to 12 kg), 1 universal endoscope holder, 1 standard profile rail, 1 multiple socket outlet (standard).

### 45 cart

Dim.: 701 x 648 x 1516 mm (w x d x h)

Decorative strips	Ref. no.
grey	20841
blue	20842
1 pair of angular push handles grey	20193

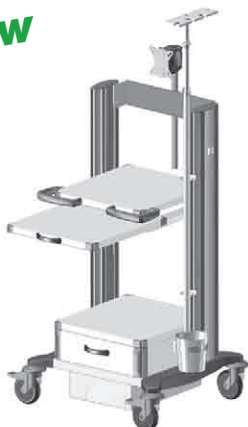
### 63 cart

Dim.: 880 x 648 x 1516 mm (w x d x h)

Decorative strips	Ref. no.
grey	20851
blue	20852
1 pair of angular push handles grey	20193

## toro endoscopy cart 4

**NEW**



with 2 shelves, 1 pull-out shelf for keyboard with extensible mousepad and handle, 1 standard profile rail at the left carrier section, 1 drawer, 1 horizontal arm with alegro monitor holder (load capacity up to 12 kg), 1 universal endoscope holder with collecting vessel and attachment 1 isolating transformer undermounted on the chassis and IEC 320 type C14 multiple 1000 VA socket with 6 outlets, 1 central on/off switch lateral on the left in the profile.

### 45 cart

Dim.: 701 x 648 x 1260 mm (w x d x h)

Decorative strips	Ref. no.
grey	20861
blue	20862
1 pair of angular push handles	20193

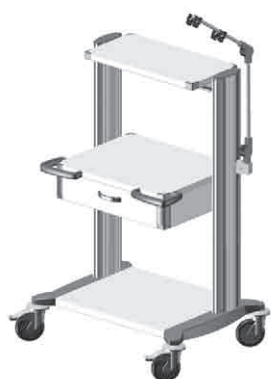
### 63 cart

Dim.: 880 x 648 x 1260 mm (w x d x h)

Decorative strips	Ref. no.
grey	20871
blue	20872
1 pair of angular push handles	20193

# Ergometry cart / Emergency cart / Anaesthesia cart

## toro ergometry cart



with 2 shelves 485 mm deep, 1 shelf 300 mm deep, 1 drawer, 1 cable holder with fastening clamp.

### 45 cart

Dim.: 701 x 648 x 1516 mm (w x d x h)

Decorative strips	Ref. no.
grey	20371
blue	20372
1 pair of angular push handles grey	20193

### 63 cart

Dim.: 880 x 648 x 1516 mm (w x d x h)

Decorative strips	Ref. no.
grey	20501
blue	20502
1 pair of angular push handles grey	20193

## toro emergency cart



with 2 shelves 485 mm deep, 1 shelf 300 mm deep incl. anti-slide mat, 3 drawers.

### 45 cart

Dim.: 701 x 648 x 1260 mm (w x d x h)

Decorative strips	Ref. no.
grey	20591
blue	20592
1 pair of angular push handles grey	20193
Cardiac massage board	13948

### 63 cart

Dim.: 880 x 648 x 1260 mm (w x d x h)

Decorative strips	Ref. no.
grey	20731
blue	20732
1 pair of angular push handles grey	20193
Cardiac massage board	13948

## toro anaesthesia cart



with 1 shelf, 5 drawers (125 mm high).

### 45 cart

Dim.: 701 x 648 x 876 mm (w x d x h)

Decorative strips	Ref. no.
grey	20601
blue	20602
1 pair of angular push handles grey	20193

### 63 cart

Dim.: 880 x 648 x 876 mm (w x d x h)

Decorative strips	Ref. no.
grey	20741
blue	20742
1 pair of angular push handles grey	20193

## System parts for toro

### Chassis / Carrier columns

#### Chassis toro

with basic shelf, 4 quality easy-run castors, 125 mm dia. with wall guards (2 castors lockable).



#### 45 cart

Dim.: 701 x 648 x 203 mm (w x d x h)

Chassis	Ref. no.
Castors dia. 125 mm	20051

#### 63 cart

Dim.: 880 x 648 x 203 mm (w x d x h)

Chassis	Ref. no.
Castors dia. 125 mm	20086

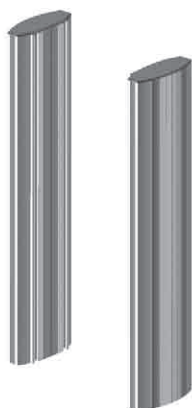
Dim.: 701 x 648 x 232 mm (w x d x h)

Chassis	Ref. no.
Castors dia. 150 mm electrically conductive	20143

Dim.: 880 x 648 x 232 mm (w x d x h)

Chassis	Ref. no.
Castors dia. 150 mm electrically conductive	20087

#### Carrier columns standard heights



1 pair made of anodized aluminium with cover cap, integrated cable duct and decorative strips in grey or blue.

#### height of profile: 668 mm

Decorative strips	Ref. no.
grey	20121
blue	20122

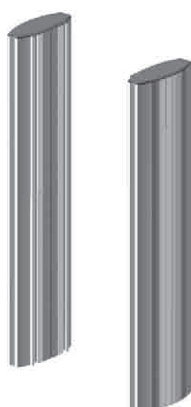
#### height of profile: 1052 mm

Decorative strips	Ref. no.
grey	20131
blue	20132

#### height of profile: 1308 mm

Decorative strips	Ref. no.
grey	20141
blue	20142

#### Carrier columns individual heights



1 pair made of anodized aluminium with cover cap, integrated cable duct and decorative strips in grey or blue.

height \ colours	Decorative strips grey	Decorative strips blue
0 - 636 mm	20331	20332
700 - 1020 mm	20341	20342
1084 - 1266 mm	20351	20352
1340 - 1820 mm	20361	20362

## Castors / Handles

### Castors, dia. 125 mm electrically conductive



High-quality easy-run castors, max. load 130 kg, extra charge for 4 castors, (two castors lockable).

**Ref. no.**  
18064

### Castors, dia. 150 mm electrically conductive



High-quality easy-run castors, max. load 2500 kg, extra charge for 4 castors, (two castors lockable).

**Ref. no.**  
20058

### Angular push handle



elegant and practical, made of polyamide plastic, colour: grey.

**Ref. no.**  
20191

### Drawer handle



with label window, made of ABS plastic, colour: grey.

**Ref. no.**  
20061

## Shelves / Pull-out shelf / Pull-out shelf for keyboard

### Shelf, 485 mm deep



made of powder-coated steel, grey-white (RAL 9002) with grey decorative corners.

#### 45 cart

Dim.: 450 x 485 x 30 mm (w x d x h)

**Ref. no.**  
20161

#### 63 cart

Dim.: 630 x 485 x 30 mm (w x d x h)

**Ref. no.**  
20441

### Shelf, 300 mm deep



made of powder-coated steel, grey-white (RAL 9002) with grey decorative corners.

#### 45 cart

Dim.: 450 x 300 x 30 mm (w x d x h)

**Ref. no.**  
20101

#### 63 cart

Dim.: 630 x 300 x 30 mm (w x d x h)

**Ref. no.**  
20035

### Pull-out shelf



made of powder-coated steel, grey-white (RAL 9002), telescopic rail with grey decorative corners, grey handle with label window. Pull-out length 300 mm.

#### 45 cart

Dim.: 450 x 485 x 30 mm (w x d x h)

**Ref. no.**  
20081

#### 63 cart

Dim.: 630 x 485 x 30 mm (w x d x h)

**Ref. no.**  
20100

### Pull-out shelf for keyboard



made of powder-coated steel, grey-white (RAL 9002) with extensible mousepad, telescopic rail with grey decorative corners, grey handle with label window. Pull-out length 300 mm.

#### 45 cart

Dim.: 450 x 485 x 30 mm (w x d x h)

**Ref. no.**  
20228

#### 63 cart

Dim.: 630 x 485 x 30 mm (w x d x h)

**Ref. no.**  
20095



## LaptopSafe / Anti-slide mat / Rail / Drawer / Drawer inset

### LaptopSafe lockable

**NEW**



protects the laptop (up to 17 inches) against theft. Material combination made of grey synthetic material and steel, powder-coated white-aluminium (RAL 9006), mountable on smooth surfaces.

#### 63 cart

Dim.: 498 (451) x 374 x 84 mm (w x d x h)

LaptopSafe	Ref.-no.
without mousepad	19596
with mousepad	19730

### Anti-slide mat for shelves

made of Ethylen Vinylacetat Copolymer (EVA), transparent, noise-damming.

#### 45 cart

Dim.: 450 x 300 mm (w x d)

#### Ref. no.

16161

Dim.: 450 x 450 mm (w x d)

#### Ref. no.

15541

#### 63 cart

Dim.: 630 x 300 mm (w x d)

#### Ref. no.

17647

Dim.: 630 x 450 mm (w x d)

#### Ref. no.

17743

### Rail for shelf



powder-coated tubular steel, white aluminium (RAL 9006).

#### 45 cart

#### Ref. no.

20073

#### 63 cart

#### Ref. no.

20089

### Drawer



steel housing, aluminium front panel, powder-coated, grey-white (RAL 9002), drawer guide with soft-closing feature, 1 grey handle with label window and grey decorative angulars.

#### 45 cart

Dim.: 450 x 487 x 125 mm (w x d x h)

#### Ref. no.

20181

#### 63 cart

Dim.: 630 x 487 x 125 mm (w x d x h)

#### Ref. no.

20451

Central locking on request.

#### Lock

Surcharge for lockable drawer 45 or 63

#### Ref. no.

20099

### Drawer inset

with variable partitions and flexible dividers. Made of transparent synthetic material, removable and suitable for cleaning in the dishwasher.



#### 45 cart

with 1 lengthways divider and 4 crossways dividers

#### Ref. no.

16722

#### 63 cart

with 2 lengthways dividers and 6 crossways dividers

#### Ref. no.

16721

## Cable duct horizontal arm / Horizontal arms

### Cable duct horizontal arm



with movable holders for the optimal integration of up to 6 cables, with grey cover.

**45 cart**

Dim.: 450 x 30 x 75 mm (w x d x h)

**Ref. no.**

20119

**63 cart**

Dim.: 630 x 30 x 75 mm (w x d x h)

**Ref. no.**

20136

### Horizontal arm with TFT mount



for flat-screens (VESA 75/100).

**45 cart**

Dim.: 450 x 20 x 100 mm (w x d x h)

**Ref. no.**

20097

**63 cart**

Dim.: 630 x 20 x 100 mm (w x d x h)

**Ref. no.**

20155

### Horizontal arm with alegro monitor holder



on height-adjustable round bar for flat-screens (VESA 75/100). Load capacity up to 12 kg.

**45 cart**

Dim.: 450 x 20 x 100 mm (w x d x h)

**Ref. no.**

20148

**63 cart**

Dim.: 630 x 20 x 100 mm (w x d x h)

**Ref. no.**

20088

## Accessories for toro

### PC support / Wire basket / Swivelling arm / TFT mount

#### PC support



with mount above and below (RAL 9006) for fastening on inside or on the outside at the profile, mounted on the right or left side. Please specify when ordering.

**Ref. no.**

20040

#### Wire basket



to be mounted at the side of the carrier column, steel, powder-coated, white aluminium (RAL 9006).

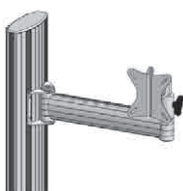
Dim.:  
377 x 196 x 115 mm (w x d x h)

**Ref.-Nr.**

20150

#### Swivelling arm with TFT mount

**NEW**



for flat-screens (VESA 75/100) to arm with bracket. Rotatable and tilting with swivelling arm (range 300 mm), white aluminium (RAL 9006). Load capacity up to 12 kg.

**Ref. no.**

20533

#### TFT-TFT screen mount



for flat screens (VESA 75/100), attached to a height-adjustable rod, steel, powder-coated (RAL 9006). Load capacity up to 15 kg.

**Ref. no.**

20113

## alegro - monitor carrier system

For steplessly and precisely fixation without any physical exertion. Horizontally and vertically rotatable, tilting and swivelling function. Monitor adaption VESA 75/100.

### alegro monitor holder



on tightly adjusted rod in the carrier profile.

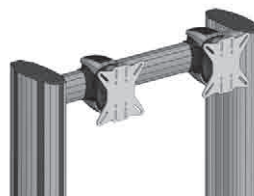
Load capacity up to 12 kg

**Ref. no.**  
25010

Load capacity up to 18 kg

**Ref. no.**  
25034

### alegro holder for double monitoring



on aluminium-traverse (w 630 mm) between two carrier profiles for simple, synchronous positioning of 2 monitors. Cable duct inside the profiles.

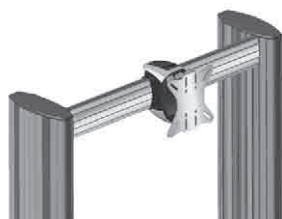
Load capacity up to 2 x 12 kg

**Ref. no.**  
25067

Load capacity up to 2 x 18 kg

**Ref. no.**  
25068

### alegro monitor holder



on aluminium-traverse between two carrier profiles.

#### 45 cart

Load capacity up to 12 kg

**Ref. no.**  
25060

Load capacity up to 18 kg

**Ref. no.**  
25061

#### 63 cart

Load capacity up to 12 kg

**Ref. no.**  
25056

Load capacity up to 18 kg

**Ref. no.**  
25057

### alegro monitor holder on swivel arm



with 1 hinge joint and integrated cable duct. Reach 300 mm.

Load capacity up to 12 kg

**Ref. no.**  
25025

Load capacity up to 18 kg

**Ref. no.**  
25051

### alegro monitor holder on swivel arm



with 2 hinge joints and integrated cable duct. Reach 300 mm.

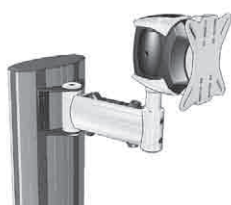
Load capacity up to 12 kg

**Ref. no.**  
25021

Load capacity up to 18 kg

**Ref. no.**  
25047

### alegro monitor holder on articulated arm



with adapter angle outside or inside of the carrier profile and integrated cable duct. Reach 300 mm.

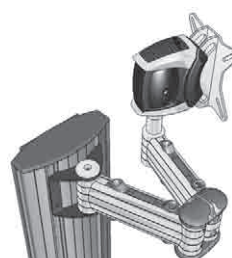
Load capacity up to 12 kg

**Ref. no.**  
25011

Load capacity up to 18 kg

**Ref. no.**  
25037

### alegro monitor holder on double articulated arm



with adapter angle outside or inside of the carrier profile and integrated cable duct. Reach 2 x 150 mm.

Load capacity up to 12 kg

**Ref. no.**  
25012

Load capacity up to 18 kg

**Ref. no.**  
25038

## Infusion bottle holder / Universal endoscope holder / Cable- and hose holder

### Infusion bottle holder



for single-handed operation, chrome-plated with 4 hooks, dia. 25 mm.

**Ref. no.**  
20197

### Universal endoscope holder / Endoscope tube



Universal holder for endoscopes with openings, height-adjustable rod, for single-handed operation.

**Ref. no.**  
20196

Endoscope tube of plexiglas, open at the bottom, 120 cm long, inside dia. 3,2 cm, outside dia. 4 cm, incl. holding clips.

**Ref. no.**  
13977

As above, closed at the bottom for disinfectant solution.

**Ref. no.**  
13978

### Cable / hose holder



made of anodized aluminium with grey fastening clamp. Reach approx. 95 cm.

**Ref. no.**  
13926

### Cable / hose holder with flex-shaft



made of silver grey plastic, with chrome flex-shaft, fastening clamp included. Reach approx. 110 cm

**Ref. no.**  
16651

## Cardiac massage board / Standard profile rail / Waste collector

### Cardiac massage board



white made of Trespa, a material which is especially hygienic and resistant to disinfectants.

Dim.:  
440 x 10 x 640 mm (w x d x h)

**Ref. no.**  
13948

### Standard profile rail



made of metal with 2 securing points for lateral fastening. Length 420 mm.

**Ref. no.**  
20080

### Waste collector with knee operation



with practical knee operated opening system, body in ABS plastic, white (RAL 9016), fixing material included.

Please order 2 standard profile rails, ref. no. 20080 for the fastening at the toro.

Dim.: 220 x 220 x 360 mm (w x d x h)

Capacity	Ref. no.
8 ltrs.	20084

Dim.: 350 x 250 x 520 mm (w x d x h)

Capacity	Ref. no.
20 ltrs.	20085

## Waste collector / Waste container / Dispenser / Organisation systems

### Waste collector Piccolo



made of steel sheet, aluminium colour laminated or made of stainless steel, with 1 roll of waste bags à 15 ltrs.

Please order the lid separately.

Dim.: 280 x 160 x 410 mm (w x d x h)

Piccolo	Ref. no.
aluminium colour laminated	20198
stainless steel	20199

#### Lid for Piccolo

Dim.: 280 x 170 x 20 mm (w x d x h)

Lid	Ref. no.
aluminium colour laminated	07874
stainless steel	09636

### Waste container for instruments



white polypropylene bowl with slit lid, can be sterilized.

Dim.:  
300 x 230 x 130 mm (w x d x h)

Ref. no.
13912

### Waste container



with/s bowl, dia. 320 mm and attachment device.

Ref. no.
13911

### Soap and disinfectant dispenser



can be attached at the right or left side of the cart. Naturally anodised aluminium.

Capacity: 1 ltr.  
Dim.:  
94 x 92 x 327 mm (w x d x h)

Ref. no.
20200

Capacity: 0.5 ltr.  
Dim.:  
82 x 82 x 283 mm (w x d x h)

Ref. no.
20153

### Drip pan



with removable bowl to hang up for the soap and disinfectant dispenser.

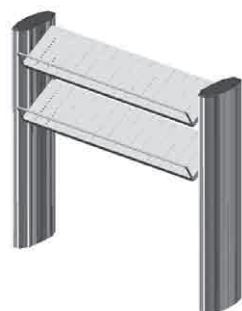
for Ref. no. 20200

Ref. no.
16256

for Ref. no. 20153

Ref. no.
20154

### Organisation system



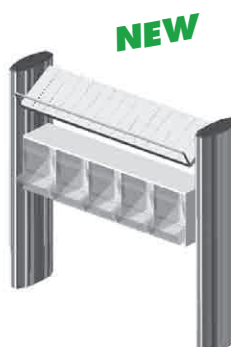
#### for toro 63

with 2 special steel tilted deposit levels and 10 moveable clips for conventional material packages.

Dim. of the canula dispenser:  
628 x 150 x 16 mm (w x d x h)

Ref. no.
20149

### Organisation system with PicBox®



**NEW**

#### for toro 63

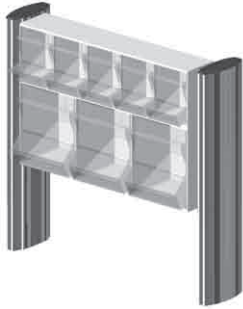
consisting of the PicBox® canula dispenser with 5 small boxes and 1 special steel tilted deposit level and 5 moveable clips.

Dim.:  
628 x 150 x 16 mm (w x d x h)

Ref. no.
20118

## Injection set / KOMBI set / Canula container / Ampoule opener

### Injection set PicBox®



#### for toro 63

The dispenser with first-in/first-out guarantee in accordance with DIN 58953. The boxes are replenished from the top, the material taken from below. This ensures that items placed in first will also be used first. Greywhite plastic casing with transparent acrylic glass boxes. Each box with a separate covering lid (dust-proof). Consisting of syringe dispenser with 3 boxes and needle dispensers with 5 boxes.

Dim.:  
600 x 200 x 410 mm (w x d x h)

**Ref. no.**

20090

### KOMBI set



Recommended for taking blood samples and giving injections. TAKEFIX swab dispenser and TIPPFIX swab moisturiser plus additional container made of greywhite, unbreakable plastic.

Dim.:  
120 x 230 x 265 mm (w x d x h)

**Ref. no.**

13916

### Canula container Schluckfix



Disposable container for approx. 500 used canulas, made of black recycled plastic. Sliding scale price list available on request.

Schluckfix set with 20 boxes and attachment device for toro.

Dim.:  
55 x 100 x 170 mm (w x d x h)

**Ref. no.**

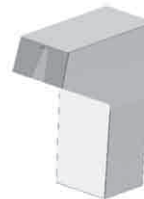
20170

Schluckfix carton with 100 boxes without attachment

**Ref. no.**

09490

### Ampoule opener CUPFIX



Plastic casing, grey-white, receptacle for used ampoules, removable. Diamond file is spring-loaded in a stainless steel casing.

Dim.:  
70 x 150 x 200 mm (w x d x h)

**Ref. no.**

20210

Replacement diamond file for CUPFIX, separately

**Ref. no.**

04663

### Mounting

for Schluckfix suitable for toro, separately

**Ref. no.**

20180

### Mounting

for CUPFIX suitable for toro, separately

**Ref. no.**

20233

## Disposal boxes / Catheter holder / Arm support / Holder for oxygen bottle

### Disposal boxes Medi-Müll, 1.5 ltrs.



made of sunshine yellow polypropylene with HAEBERLE-green lid. Offers 3 practical ways for the disposal of all types of needles, vacuum containers included. Ideally suited for scalpels, pipettes, broken glass, swabs etc.

Height 152 mm,  
dia. of the lid: 143 mm  
dia. of the base: 108 mm  
1.5 ltrs. capacity.

Medi-Müll set with 20 boxes  
and attachment for toro.

**Ref. no.**  
20190

Bulk discounts on request.

**Mounting, separately**  
for Medi-Müll, suitable for toro.

Medi-Müll carton  
with 100 boxes,  
without attachment

**Ref. no.**  
20232

**Ref. no.**  
16653

### Catheter holder



made of s/s, 3 compartments,  
for hanging on standard profile  
rail.

Dim.:  
160 x 80 x 570 mm (w x d x h)

**Ref. no.**  
20234

Please order the standard profile  
rail, too! Ref. no. 20080

### Arm support



extra sturdy, black. Padded  
with integral upholstered foam,  
with 2 attachment devices.

**Ref. no.**  
13923

### Holder



for oxygen bottle 5/10 ltrs.  
with dia. up to 145 mm.  
Upper holder with fixing  
tape included.

**Ref. no.**  
20236

### Holder



for oxygen bottle 2 ltrs.,  
upper supporting ring dia. 120 mm,  
lower supporting ring dia. 84 mm,  
silveraluminium. Mounting at the  
carrier profile.

**Ref. no.**  
20060

### Additional upper holder

separately with fixing tape.

**Ref. no.**  
20237

## Various Accessories

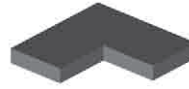
### Universal holder Snap



for boxes of disposable gloves, tissues or wipes. The spring-loaded clamp is adjustable to fit many box sizes up to about 1 kg; for singlehand operation. Attachment for toro included.

**Ref. no.**  
15606

### Fixing parts for devices



set with 4 fixing parts to steady the devices when the cart is being moved, made of cellular rubber, black, adhesive on one side.

Dim.:  
40 x 40 x 5 mm (w x d x h)

**Ref. no.**  
17222

### Clip-holder



for securing cables, made of grey plastic. Mounted in the profile grooves.

**Ref. no.**  
19015

### Holder for Kensington lock



for preventing the theft of notebooks, mounting at the profile. Lock is not included.

**Ref. no.**  
16424

### Multiple socket outlet, standard



4 grounding sockets, light-grey cable (3 m long) with moulded grounding plug, green 2-pin switch, quality housing anodised aluminium, 2 grey plastic fastening angles included.

Dim.:  
269 x 44 x 44 mm (w x d x h)

**Ref. no.**  
21695

Further multiple socket outlets you will find in the separate electrical accessories list.

## Electrical accessories

Suitable for the equipment cart systems, we offer you a comprehensive range of electrical accessories in various country-specific versions.

- The product range contains:
- Standard multiple socket outlets
  - Modular multiple socket outlets
  - Central on/off switch
  - Isolating transformers
  - Equipotential bonding system MultiContact POAG
  - Electrical connections according to IEC 320 C13/C14
  - Cable management and plug-out protection

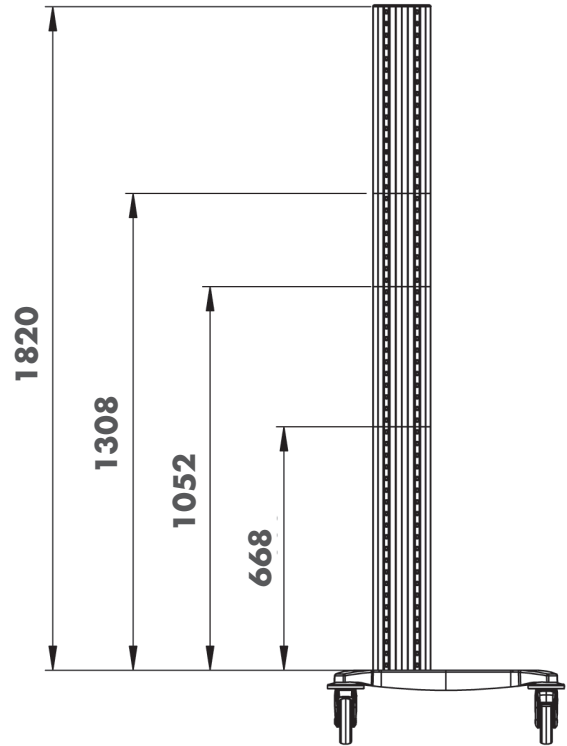
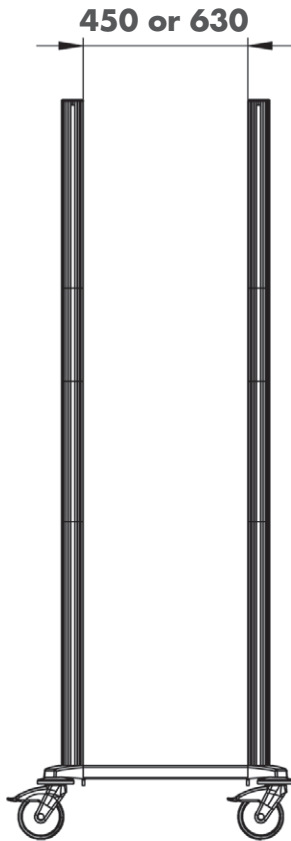
On request we send you the separate list with information about the electrical accessories. Please feel free to contact our customer consultants.



# Planning sketch for your toro cart

Width in mm

Height in mm



## Carrier column heights in mm



**standard heights**

668

1052

1308

**variable heights**

0 - 636

700 - 1020

1084 - 1266

1340 - 1820

For optimal stability each toro cart with carrier unit up from 668 mm has to be equipped with one horizontal arm or with a cable duct horizontal arm.

## Castors



<b>toro cart</b>	<b>45</b>	<b>63</b>
Ø 125 castors	<input type="checkbox"/>	<input type="checkbox"/>
electrically conductive	<input type="checkbox"/>	<input type="checkbox"/>
Ø 150 castors	<input type="checkbox"/>	<input type="checkbox"/>
electrically conductive	<input type="checkbox"/>	<input type="checkbox"/>

All prices are understood exclusive of VAT. As an innovative company we reserve the right to amend prices and designs. As for the rest our General Terms of Business in the valid version apply.

WEEE-Reg.-no. DE 20235235



Haerberle specializes in particular in providing customized OEM versions for industrial clients. Let us know your specifications and we will provide you a product according to your personally requirements.

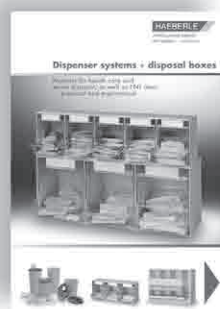
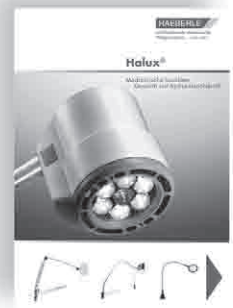
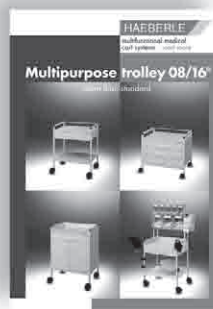


Please contact us!

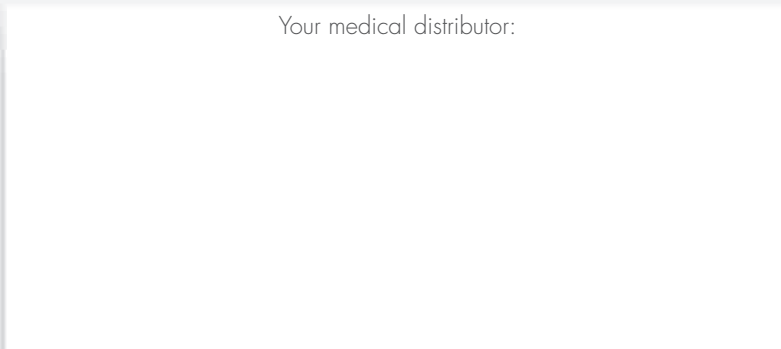


The robust equipment cart system **toro** with especially high stability for compact device combinations.

## Our versatile product range



Your medical distributor:



HAEBERLE GmbH + Co. KG

Breitwiesenstr. 13

DE-70565 Stuttgart

P.O.Box 800524 . DE-70505 Stuttgart

Phone +49 (0) 711/78314-0

Fax +49 (0) 711/78314-77

Email: [info@haeberle-med.de](mailto:info@haeberle-med.de)

Internet: [www.haerberle-med.de](http://www.haerberle-med.de)