

HAEBERLE

mobile workstations

Type list valid from 1 July 2019

robust and striking

equipment cart system
heavy duty



toro
by HAEBERLE

toro

- the robust and striking equipment cart system

toro - the robust design of the modular cart system is what really makes it stand out from the crowd; the system combines striking design with especially high stability. Its high capacity allows toro to meet the highest demands as a mobile carrier system for large device combinations.

The toro carts in widths of 45 and 63 cm and with decorative accents in grey or blue can be adapted to suit all application fields and complemented with corresponding system components and accessories for the most diverse of applications. The toro system can also be configured to meet your personal requirements if you so wish.

**HAEBERLE
HAS IT**

**HAEBERLE
MAKES IT**

Features: Chic, stable chassis, spacious 2-pillar aluminium carrier unit with integrated cable duct for perfect cable management and for mounting socket boards and accessories. Sturdy, hygienic metal shelves with rounded decorative corners, smooth drawers with self-closing feature including practical handle with a label window and convenient corner push handles.

Function: As basic cart, equipment cart, ergometry cart, endoscopy cart, emergency cart, computer cart ...and more.

Application: In clinics, rehabilitation centres and doctors' practices.

Note: For safety's sake some selected equipment carts are equipped with a POAG pin now.



POAG equipotential bonding system conforming to DIN 42801

In rooms used for medical purposes, equipment and other conductive parts may have different potentials, which poses a risk to persons. Equipotential bonding offers safe protection.

From now on, a POAG pin will be mounted on selected equipment carts at the factory, and undergo electrical testing as part of final acceptance. If your rooms do not already have one, please order the correct equipotential bonding cable as well. Our team would be happy to advise you.

In the toro equipment cart system, a POAG pin (Ref. No. 19529) is mounted on the rear of the base plate. Retro-fitting on the rail by the customer is possible, but must be carried out by qualified personnel.

Components

- Extremely strong chassis with high-quality, easy-run castors. The front 2 castors are lockable. Electrically conductive castors are deliverable on request.
- Precious 2-pillar aluminium carrier profiles with cover and integrated cable duct for optimal cable management and multiple socket outlet. With 32 mm grid of mounting system parts.
- Grey or blue decorative strips.
- Strong, hygienic metal shelves with rounded grey decorative corners.
- Well-formed drawers with soft self-closing feature and practical grey handle with label window.
- Striking grey angular push handles. 2 or 4 push handles can be mounted at the cart.
- Cable duct horizontal arm with integrated cable guide for the horizontal laying of up to 6 cables or for a multiple socket outlet.
- Pull-out shelf with grey decorative angulars and handle for setting up equipment or keyboard.
- Rail for shelf for securing equipment when moving the cart.

Technical details / dimensions

Cart outer dimensions:	with shelf width 450 mm 701 x 648 x 876 mm (w x d x h) 701 x 648 x 1260 mm (w x d x h) 701 x 648 x 1516 mm (w x d x h)
	with shelf width 630 mm 880 x 648 x 876 mm (w x d x h) 880 x 648 x 1260 mm (w x d x h) 880 x 648 x 1516 mm (w x d x h)
Maximum load:	up to 130 kg (castors Ø 125 mm) up to 250 kg (castors Ø 150 mm)
Carrier profiles height:	668 / 1052 / 1308 mm standard
Shelf outer dimensions:	450 x 485 x 30 mm (w x d x h) 630 x 485 x 30 mm (w x d x h)
Shelf load limit:	up to 50 kg per shelf
Pull-out shelves outer dimensions:	450 x 485 x 30 mm (w x d x h) 630 x 485 x 30 mm (w x d x h)
Pull-out shelf load limit:	up to 10 kg
Drawer outer dimensions:	450 x 487 x 125/250 mm (w x d x h) 630 x 487 x 125/250 mm (w x d x h)
Drawer surface load:	up to 10 kg
Quality light running castors:	4 castors Ø 125 mm with wall guards as standard. 2 castors are lockable. Castors Ø 150 mm for an extra charge.

Materials / colours

Carrier profiles:	Anodized aluminium
Cover cap:	ABS plastic, grey (6502B acc. NCS)
Chassis:	Cast aluminium, finely textured, powder-coated, grey (RAL 7012)
Decorative strip colours:	Made of PVC, grey (6502B acc. NCS) or blue (3502B acc. NCS)
Decorative angulars:	ABS plastic, grey (6502B acc. NCS)
Shelves:	Powder-coated steel, grey-white (RAL 9002)
Rail for shelves:	Powder-coated tubular steel, white-aluminium (RAL 9006)
Push handle:	Polyamide, grey (6502B acc. NCS)
Drawer handle:	ABS plastic, grey (6502B acc. NCS) with label window
Drawer:	Powder-coated steel housing, grey-white (RAL 9002) Powder-coated aluminium front panel, grey-white (RAL 9002)

Carts 45 $\hat{=}$ Shelf width 450 mm / Carts 63 $\hat{=}$ Shelf width 630 mm

All toro carts are equipped with chassis, 4 castors \varnothing 125 mm, 2 brakes and wall guards in series. Carts with drawers include grey drawer handles with label window. **Angular push handles are extra. Please order separately.** The carts shown on the following pages are delivered assembled without surcharge.

Basic cart / Equipment carts

toro basic cart



with 2 shelves, 1 drawer and 1 drawer handle. Up to 4 drawers can be retrofitted.

Cart 45 with POAG-Pin

Dim.: 701 x 648 x 876 mm (w x d x h)

Decorative strips	Ref. no.
grey	20271
blue	20272
2 angular push handles, grey	20193

Cart 63 with POAG-Pin

Dim.: 880 x 648 x 876 mm (w x d x h)

Decorative strips	Ref. no.
grey	20481
blue	20482
2 angular push handles, grey	20193

Single drawers see on page 10.

toro equipment cart 1



with 3 shelves, 1 drawer, 1 drawer handle, 1 cable duct horizontal arm for the optimal management of up to 6 cables.

Cart 45 with POAG-Pin

Dim.: 701 x 648 x 1260 mm (w x d x h)

Decorative strips	Ref. no.
grey	20781
blue	20782
2 angular push handles, grey	20193

Cart 63 with POAG-Pin

Dim.: 880 x 648 x 1260 mm (w x d x h)

Decorative strips	Ref. no.
grey	20791
blue	20792
2 angular push handles, grey	20193

toro equipment cart 2



with 4 shelves, 1 drawer, 1 drawer handle, 1 cable duct horizontal arm for the optimal management of up to 6 cables.

Cart 45 with POAG-Pin

Dim.: 701 x 648 x 1260 mm (w x d x h)

Decorative strips	Ref. no.
grey	20281
blue	20282
2 angular push handles, grey	20193

Cart 63 with POAG-Pin

Dim.: 880 x 648 x 1260 mm (w x d x h)

Decorative strips	Ref. no.
grey	20491
blue	20492
2 angular push handles, grey	20193

Computer carts

toro computer cart 1



with 2 shelves, 1 pull-out shelf for keyboard with extensible mousepad and handle, 1 drawer handle, 1 horizontal arm with TFT mount, 1 PC support for mounting on right or left side. Please specify right or left when ordering!

Cart 45 with POAG-Pin

Dim.: 701 x 648 x 1260 mm (w x d x h)

Decorative strips	Ref. no.
grey	20611
blue	20612
2 angular push handles, grey	20193

Cart 63 with POAG-Pin

Dim.: 880 x 648 x 1260 mm (w x d x h)

Decorative strips	Ref. no.
grey	20751
blue	20752
2 angular push handles, grey	20193

toro computer cart 2



with 2 shelves, 1 pull-out shelf for keyboard with extensible mousepad and handle, 1 drawer handle, 1 cable duct horizontal arm at rear under the upper shelf.

Cart 45 with POAG-Pin

Dim.: 701 x 648 x 876 mm (w x d x h)

Decorative strips	Ref. no.
grey	20621
blue	20622
2 angular push handles, grey	20193

Cart 63 with POAG-Pin

Dim.: 880 x 648 x 876 mm (w x d x h)

Decorative strips	Ref. no.
grey	20571
blue	20572
2 angular push handles, grey	20193

toro computer cart 3



with 2 shelves, 1 pull-out shelf for keyboard with extensible mousepad and handle, 1 drawer handle, 1 cable duct horizontal arm, 1 horizontal arm with "alegro" monitor holder (load capacity up to 12 kg).

Cart 45 with POAG-Pin

Dim.: 701 x 648 x 876 mm (w x d x h)

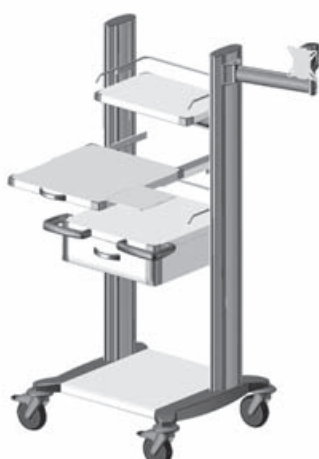
Decorative strips	Ref. no.
grey	20801
blue	20802
2 angular push handles, grey	20193

Cart 63 with POAG-Pin

Dim.: 880 x 648 x 876 mm (w x d x h)

Decorative strips	Ref. no.
grey	20811
blue	20812
2 angular push handles, grey	20193

toro computer cart 4



with 2 shelves 485 mm deep, 1 shelf 300 mm deep, 1 pull-out shelf for keyboard with extensible mousepad and handle, 1 drawer, 1 drawer handle, 2 rails for shelves, 1 cable duct horizontal arm, 1 "alegro" monitor holder on articulated arm with integrated cable guide (load capacity up to 12 kg).

Cart 45 with POAG-Pin

Dim.: 701 x 648 x 1516 mm (w x d x h)

Decorative strips	Ref. no.
grey	20821
blue	20822
2 angular push handles, grey	20193

Cart 63 with POAG-Pin

Dim.: 880 x 648 x 1516 mm (w x d x h)

Decorative strips	Ref. no.
grey	20831
blue	20832
2 angular push handles, grey	20193

Tablet/iPad equipment cart / Ergometry cart / Emergency cart / Anaesthesia cart

toro tablet/iPad equipment cart 1



with 3 shelves, 1 drawer, 1 drawer handle, 1 cable duct horizontal arm between the carrier profiles, 1 mount for tablet/iPad (ref. no. 20847).

Cart 45 with POAG-Pin

Dim.: 701 x 648 x 1260 mm (w x d x h)

Decorative strips	Ref. no.
grey	20261
blue	20262
2 angular push handles, grey	20193

Cart 63 with POAG-Pin

Dim.: 880 x 648 x 1260 mm (w x d x h)

Decorative strips	Ref. no.
grey	20631
blue	20632
2 angular push handles, grey	20193

toro ergometry cart



with 2 shelves (485 mm deep), 1 shelf (300 mm deep), 1 drawer, 1 drawer handle, 1 cable holder with fastening clamp.

Cart 45 with POAG-Pin

Dim.: 701 x 648 x 1516 mm (w x d x h)

Decorative strips	Ref. no.
grey	20371
blue	20372
2 angular push handles, grey	20193

Cart 63 with POAG-Pin

Dim.: 880 x 648 x 1516 mm (w x d x h)

Decorative strips	Ref. no.
grey	20501
blue	20502
2 angular push handles, grey	20193

toro emergency cart



with 2 shelves (485 mm deep), 1 shelf (300 mm deep) with anti-slide mat, 3 drawers, 3 drawer handles.

Cart 45 with POAG-Pin

Dim.: 701 x 648 x 1260 mm (w x d x h)

Decorative strips	Ref. no.
grey	20591
blue	20592
2 angular push handles, grey	20193
reanimation board	17370

Cart 63 with POAG-Pin

Dim.: 880 x 648 x 1260 mm (w x d x h)

Decorative strips	Ref. no.
grey	20731
blue	20732
2 angular push handles, grey	20193
reanimation board	17370

toro anaesthesia cart



with 1 shelf, 5 drawers (125 mm high), 5 drawer handles.

Cart 45 with POAG-Pin

Dim.: 701 x 648 x 876 mm (w x d x h)

Decorative strips	Ref. no.
grey	20601
blue	20602
2 angular push handles, grey	20193

Cart 63 with POAG-Pin

Dim.: 880 x 648 x 876 mm (w x d x h)

Decorative strips	Ref. no.
grey	20741
blue	20742
2 angular push handles, grey	20193

Endoscopy carts

toro endoscopy cart 1



with 5 shelves, 1 drawer, 1 drawer handle, 1 cable duct horizontal arm for the optimal integration of up to 6 cables.

Cart 45 with POAG-Pin

Dim.: 701 x 648 x 1516 mm (w x d x h)

Decorative strips	Ref. no.
grey	20291
blue	20292
2 angular push handles, grey	20193

Cart 63 with POAG-Pin

Dim.: 880 x 648 x 1516 mm (w x d x h)

Decorative strips	Ref. no.
grey	20511
blue	20512
2 angular push handles, grey	20193

toro endoscopy cart 2



with 4 shelves, 1 pull-out shelf for keyboard with extensible mousepad and handle, 1 drawer, 1 drawer handle, 1 cable duct horizontal arm for the optimal integration of up to 6 cables, 1 universal endoscope holder.

Cart 45 with POAG-Pin

Dim.: 701 x 648 x 1516 mm (w x d x h)

Decorative strips	Ref. no.
grey	20581
blue	20582
2 angular push handles, grey	20193

Cart 63 with POAG-Pin

Dim.: 880 x 648 x 1516 mm (w x d x h)

Decorative strips	Ref. no.
grey	20561
blue	20562
2 angular push handles, grey	20193

toro endoscopy cart 3



with 3 shelves, 1 pull-out shelf for keyboard with extensible mousepad and handle, 1 rail for shelf, 1 drawer, 1 drawer handle, 1 cable duct horizontal arm for the optimal integration of up to 6 cables, 1 horizontal arm with "alegro" monitor holder (load capacity up to 12 kg), 1 universal endoscope holder, 1 standard profile rail, 1 multiple socket outlet (standard).

Cart 45 with POAG-Pin

Dim.: 701 x 648 x 1516 mm (w x d x h)

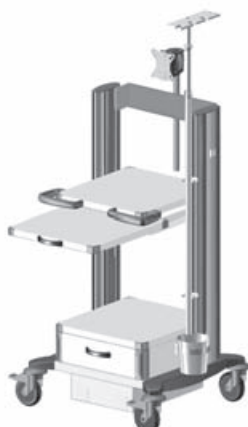
Decorative strips	Ref. no.
grey	20841
blue	20842
2 angular push handles, grey	20193

Cart 63 with POAG-Pin

Dim.: 880 x 648 x 1516 mm (w x d x h)

Decorative strips	Ref. no.
grey	20851
blue	20852
2 angular push handles, grey	20193

toro endoscopy cart 4



with 2 shelves, 1 pull-out shelf for keyboard with extensible mousepad and handle, 1 standard profile rail at the left carrier section, 1 drawer, 1 drawer handle, 1 horizontal arm with "alegro" monitor holder (load capacity up to 12 kg), 1 universal endoscope holder with collecting vessel and attachment 1 isolating transformer, undermounted on the chassis, 1 IEC 320 type C14 multiple 1000 VA socket with 6 outlets, 1 central on/off switch, laterally on the right side of the carrier profile.

Cart 45 with POAG-Pin

Dim.: 701 x 648 x 1260 mm (w x d x h)

Decorative strips	Ref. no.
grey	20861
blue	20862
2 angular push handles, grey	20193

Cart 63 with POAG-Pin

Dim.: 880 x 648 x 1260 mm (w x d x h)

Decorative strips	Ref. no.
grey	20871
blue	20872
2 angular push handles, grey	20193

System parts

Chassis / Carrier profiles / Castors

Chassis toro



with basic shelf, 4 quality easy-run castors (Ø 125 mm) with wall guards (2 castors lockable).

for **cart 45**

Dim.: 701 x 648 x 203 mm (w x d x h)

Chassis	Ref. no.
Castors Ø 125 mm	20051

for **cart 63**

Dim.: 880 x 648 x 203 mm (w x d x h)

Chassis	Ref. no.
Castors Ø 125 mm	20086

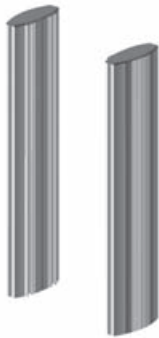
Dim.: 701 x 648 x 232 mm (w x d x h)

Chassis	Ref. no.
Castors Ø 150 mm electrically conductive	20143

Dim.: 880 x 648 x 232 mm (w x d x h)

Chassis	Ref. no.
Castors Ø 150 mm electrically conductive	20087

Carrier profiles standard heights



1 pair made of anodized aluminium with cover cap, integrated cable duct and decorative strips in grey or blue.

height of profile: 668 mm

Decorative strips	Ref. no.
grey	20121
blue	20122

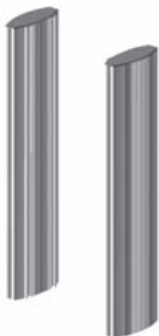
height of profile: 1052 mm

Decorative strips	Ref. no.
grey	20131
blue	20132

height of profile: 1308 mm

Decorative strips	Ref. no.
grey	20141
blue	20142

Carrier profiles in individual heights



1 pair made of anodized aluminium with cover cap, integrated cable duct and decorative strips in grey or blue.

height \ colours	Decorative strips grey	Decorative strips blue
0 - 636 mm	20331	20332
700 - 1020 mm	20341	20342
1084 - 1266 mm	20351	20352
1340 - 1820 mm	20361	20362

Castors, Ø 125 mm electrically conductive



Quality light running castors, load up to 130 kg. Extra charge for 4 castors, (2 castors are lockable).

Ref. no.
18064

Castors, Ø 150 mm electrically conductive



Quality light running castors, load up to 250 kg. Extra charge for 4 castors, (2 castors are lockable).

Ref. no.
20058

Handles / Shelves / Lateral shelf / Pull-out shelves

Angular push handle



1 piece, grey, elegant and practical, made of polyamide plastic.

Ref. no.

20191

Drawer handle 1 piece, grey, with label window, made of ABS plastic.



Ref. no.

20061

Shelf



485 mm deep, made of powder-coated steel, grey-white (RAL 9002) with grey decorative corners.

for **cart 45**

Dim.: 450 x 485 x 30 mm (w x d x h)

Ref. no.

20161

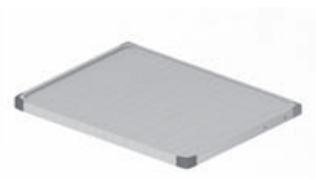
for **cart 63**

Dim.: 630 x 485 x 30 mm (w x d x h)

Ref. no.

20441

Shelf with contoured edge



485 mm deep, made of stainless steel in insensitive, elegant linen texture, with grey decorative corners. Storage space dim.: 600 x 460 x 30 mm (w x d), contoured edge 7 mm high.

for **cart 63**

Dim.: 630 x 485 x 30 mm (w x d x h)

Ref. no.

20442

Shelf



300 mm deep, made of powder-coated steel, grey-white (RAL 9002) with grey decorative corners.

for **cart 45**

Dim.: 450 x 300 x 30 mm (w x d x h)

Ref. no.

20101

for **cart 63**

Dim.: 630 x 300 x 30 mm (w x d x h)

Ref. no.

20035

Lateral shelf



fastenable on the side of the carrier profiles, made of steel, powder-coated, grey-white (RAL 9002), load capacity up to 15 kg.

for **cart 45**

Dim.: 400 x 400 x 60 mm (w x d x h)

Ref. no.

20167

for **cart 63**

Dim.: 400 x 400 x 60 mm (w x d x h)

Ref. no.

20167

Pull-out shelf



made of powder-coated steel, grey-white (RAL 9002), telescopic rail with grey decorative corners, grey handle with label window. Pull-out length 300 mm.

for **cart 45**

Dim.: 450 x 485 x 30 mm (w x d x h)

Ref. no.

20081

for **cart 63**

Dim.: 630 x 485 x 30 mm (w x d x h)

Ref. no.

20100

Pull-out shelf for keyboard



made of powder-coated steel, grey-white (RAL 9002) with extensible mousepad, telescopic rail with grey decorative corners, grey handle with label window. Pull-out length 300 mm.

for **cart 45**

Dim.: 450 x 485 x 30 mm (w x d x h)

Ref. no.

20228

for **cart 63**

Dim.: 630 x 485 x 30 mm (w x d x h)

Ref. no.

20095

Anti-slide mats / Gallery frame / Rail / Drawers

Anti-slide mat for shelves

made of ethylene vinyl acetate copolymer (EVA), transparent, noise-damming.

for **cart 45**

Dim.: 450 x 300 mm (B x T)

Ref. no.

16161

Dim.: 450 x 450 mm (B x T)

Ref. no.

15541

for **cart 63**

Dim.: 630 x 300 mm (B x T)

Ref. no.

17647

Dim.: 630 x 450 mm (B x T)

Ref. no.

17743

Gallery frame



made of stainless steel, polished. A coated plate is required beneath the gallery. Assembly ex works.

for **cart 63**

Dim.: 631 x 485 x 100 mm (w x d x h)

Ref. no.

20186

Rail, short version



for shelf, made of powder-coated tubular steel, white-aluminium (RAL 9006).

for **cart 45**

Dim.: 450 x 295 x 63 mm (w x d x h)

Ref. no.

20073

for **cart 63**

Dim.: 630 x 295 x 63 mm (w x d x h)

Ref. no.

20089

Rail, long version

Dim.: 450 x 485 x 63 mm (w x d x h)

Ref. no.

20875

Dim.: 630 x 485 x 63 mm (w x d x h)

Ref. no.

20873

Drawer 125



steel housing, aluminium front panel, powder-coated, grey-white (RAL 9002), drawer guide with soft-closing feature, 1 grey handle with label window and grey decorative angulars. Drawer surface load up to 10 kg.

for **cart 45**

External dim.:
450 x 487 x 125 mm (w x d x h)

Inner dim.:
356 x 450 x 72 mm (w x d x h)

Ref. no.

20181

for **cart 63**

External dim.:
630 x 487 x 125 mm (w x d x h)

Inner dim.:
506 x 450 x 72 mm (w x d x h)

Ref. no.

20451

Drawer 250



External dim.:
450 x 487 x 250 mm (w x d x h)

Inner dim.:
356 x 450 x 180 mm (w x d x h)

Ref. no.

20403

External dim.:
630 x 487 x 250 mm (w x d x h)

Inner dim.:
506 x 450 x 180 mm (w x d x h)

Ref. no.

20404

Lock / Anti-tamper seal / Drawer insets / Back cover / Cable duct horizontal arms

Lock

Surcharge for lockable drawer. Central locking on request.

Anti-tamper seal

made of steel, power-coated, grey-white (RAL 9002). For up to 3 drawers. (without seals).

Dim.: 57 x 95 x 260 mm (w x d x h)



Ref. no.

20099

Ref. no.

13958

Drawer inset

with variable partitions and flexible dividers. Made of transparent synthetic material, removable and suitable for cleaning in the dishwasher.

for **cart 45**

with 1 lengthways divider and 4 crossways dividers

for **cart 63**

with 2 lengthways dividers and 6 crossways dividers



Ref. no.

16722

Ref. no.

16721

Back cover "comfort"

powder-coated steel, grey-white (RAL 9002). To cover electrical components, such as multiple socket outlets and cables.

at carrier profiles 1052 mm high,

for **cart 45**

Dim.: 488 x 105 x 1052 mm (w x d x h)

for **cart 63**

Dim.: 668 x 105 x 1052 mm (w x d x h)

Ref. no.

20520

Ref. no.

20580



at carrier profiles 1308 mm high,

for **cart 45**

Dim.: 528 x 105 x 1308 mm (w x d x h)

for **cart 63**

Dim.: 711 x 105 x 1308 mm (w x d x h)

Ref. no.

20560

Ref. no.

20570

Cable duct horizontal arm

between the carrier profiles, with movable holders for the optimal integration of up to 6 cables. With grey profile cover.

for **cart 45**

Dim.: 450 x 30 x 75 mm (w x d x h)

for **cart 63**

Dim.: 630 x 30 x 75 mm (w x d x h)



Ref. no.

20119

Ref. no.

20136

Horizontal arms / Cross member / Mount for tablet/iPad / Brackets for pipes

Horizontal arm with TFT mount



for flat-screens (VESA 75/100).

for **cart 45**

Dim.: 450 x 20 x 100 mm (w x d x h)

Ref. no.

20097

for **cart 63**

Dim.: 630 x 20 x 100 mm (w x d x h)

Ref. no.

20155

Horizontal arm with "alegro" monitor holder



on height-adjustable rod for flat-screens (VESA 75/100). Load capacity up to 12 kg.

for **cart 45**

Dim.: 450 x 20 x 100 mm (w x d x h)

Ref. no.

20148

for **cart 63**

Dim.: 630 x 20 x 100 mm (w x d x h)

Ref. no.

20088

Cross member



at the top of the carrier profiles for holding various accessories. Steel, powder-coated, grey-white (RAL 9002). Load up to 10 kg.

for **cart 45**

Dim.: 571 x 158 x 6 mm (w x d x h)

Ref. no.

20888

for **cart 63**

Dim.: 750 x 158 x 6 mm (w x d x h)

Ref. no.

20887

Mount for tablet/iPad on cross member

new



Cross member made of powder-coated steel, grey-white (RAL 9002) with mount for tablet/iPad. Anodised aluminium, adjustable from 7" to 10" Horizontally and vertically rotatable and tiltable, with theft protection.

for **cart 45**

Dim.: 571 x 158 x 332 mm (w x d x h)

Ref. no.

20845

for **cart 63**

Dim.: 750 x 158 x 332 mm (w x d x h)

Ref. no.

20846

Brackets for pipes



for holding the "alegro" monitor holder, TFT mount, a lamp or cable and hose holder. Suitable for cross member on **cart 45 and 63**.

Dim.: 70 x 50 x 74 mm (w x d x h)

for "alegro" monitor holder (pipe Ø 25 mm)

Ref. no.

20889

Ref. no.

20890

for TFT mount (tube Ø 22 mm)

Ref. no.

20891



Dim.: 70 x 50 x 47 mm (w x d x h)

for a lamp or cable and hose holder (pipe Ø 16 mm)

"alegro" monitor carrier system - different variants

For stepless and precise fixation without any physical exertion. Horizontally and vertically rotatable, tilting and swivelling function. Monitor adaption VESA 75/100.

"alegro" monitor holder

on tightly adjusted rod in the carrier profile.
(Height approx. 400 mm above the profile)



Load capacity up to 12 kg

Ref. no.

25010

Load capacity up to 18 kg

Ref. no.

25034

"alegro" holder for double monitoring

on aluminium-traverse (w 630 mm) between two carrier profiles for simple, synchronous positioning of 2 monitors. Cable duct inside the profiles.



for **Cart 63**

Load capacity up to 2 x 12 kg

Ref. no.

25067

Load capacity up to 2 x 18 kg

Ref. no.

25068

"alegro" monitor holder

on aluminium-traverse between two carrier profiles.
for **cart 45**



Load capacity up to 12 kg

Ref. no.

25060

Load capacity up to 18 kg

Ref. no.

25061

for **cart 63**

Load capacity up to 12 kg

Ref. no.

25082

Load capacity up to 18 kg

Ref. no.

25083

"alegro" monitor holder on swivel arm

with 1 hinge joint and integrated cable duct.
Reach 300 mm.



Load capacity up to 12 kg

Ref. no.

25025

Load capacity up to 18 kg

Ref. no.

25051

"alegro" monitor holder on swivel arm

with 2 hinge joints and integrated cable duct.
Reach 300 mm.



Load capacity up to 12 kg

Ref. no.

25021

Load capacity up to 18 kg

Ref. no.

25047

"alegro" monitor holder on articulated arm

with adapter angle outside or inside of the carrier profile and integrated cable duct.
Reach 300 mm.



Load capacity up to 12 kg

Ref. no.

25011

Load capacity up to 18 kg

Ref. no.

25037

"alegro" monitor holder on double articulated arm

with adapter angle outside or inside of the carrier profile and integrated cable duct.
Reach 2 x 150 mm.



Load capacity up to 12 kg

Ref. no.

25012

Load capacity up to 18 kg

Ref. no.

25038

Accessories

PC support / Wire basket / Swivelling arm / TFT mount / Mount for tablet/iPad / Infusion bottle holder / Universal endoscope holder / Cable and hose holders

PC support



with holder, (RAL 9006) above/below and fixing strap. For fastening inside or outside on the carrier profile. Please specify the mounting side, on the right or left, when ordering.

Ref. no.

20040

Wire basket



to be mounted at the side of the carrier profile, steel, powder-coated, white-aluminium (RAL 9006).

Dim.:

377 x 196 x 115 mm (w x d x h)

Ref. no.

20150

Swivelling arm with TFT mount



for flat-screens (VESA 75/100) to arm with bracket. Rotatable and tilting with swivelling arm (range 300 mm), white-aluminium (RAL 9006). Load capacity up to 12 kg.

Ref. no.

20533

TFT mount



for flat screens (VESA 75/100), attached to a height-adjustable rod, steel, powder-coated, white-aluminium (RAL 9006). Load capacity up to 15 kg.

Ref. no.

20113

Mount for tablet/iPad



for fastening to the side of the carrier profile (at front or at rear). Anodised aluminium, adjustable from 7" to 10". Horizontally and vertically rotatable and tiltable, with theft protection.

Ref. no.

20847

Infusion bottle holder



for single-handed operation, chrome-plated with 4 hooks, Ø 25 mm.

Ref. no.

20197

Universal endoscope holder



made of plexiglass with several openings, height-adjustable rod, for single-handed operation.

Ref. no.

20196

Endoscope tube of plexiglass, open at the bottom, 120 cm long, inside Ø 3,2 cm, outside Ø 4 cm, with holding clips.

Ref. no.

13977

As above, closed at the bottom for disinfectant solution.

Ref. no.

13978

Cable and hose holder



with 2 joints, silvergrey aluminium including assembly clamp. Reach approx. 950 mm.

Ref. no.

13926

Cable and hose holder with flex-shaft



with 2 joints, silvergrey aluminium flexible shaft chrome plated, including assembly clamp. Reach approx. 1100 mm.

Ref. no.

16651

Reanimation board / Standard profile rail / Waste collectors / Soap and disinfectant dispenser / Drip tray

Reanimation board with holder



blue, made of sturdy polyethylene, 2 kg lightweight supports up to 150 kg. Holder made of stainless steel. Suitable for trolleys with minimum 380 mm high rear walls.

Dim.:
600 x 420 x 60 mm (w x d x h)

Ref. no.

17370

Standard profile rail



made of stainless steel, with 2 securing points for lateral fastening. Length 420 mm.

Ref. no.

20080

Waste collector "tango"



with practical knee operated opening system, body in ABS plastic, white (RAL 9016), fixing material included. Please order 2 standard profile rails, (ref. no. 20080), for fastening to the cart.

Capacity 8 litres

Dim.:
220 x 220 x 360 mm (w x d x h)

Ref. no.

20084

Capacity 20 litres

Dim.:
350 x 250 x 520 mm (w x d x h)

Ref. no.

20085

Waste collector "tomo"



made of smooth and easy to clean plastic (100% polypropylene), grey (RAL 7045), with detachable, well closing lid and with mount. Capacity of 10 litres (for disposable bags approx. w 450 x h 350 mm).

Dim.:
315 x 180 x 315 mm (w x d x h)

for **toro**

Ref. no.

20340

for **standard profile rail**

Ref. no.

14066

Soap and disinfectant dispenser



made of naturally anodised aluminium, for standard bottles of 1 litre, with fixing material.

Dim.:
95 x 185 x 290 mm (w x d x h)

Ref. no.

20200

Sensor dispenser



with hygienic sensor technology for the contact-free withdrawal of liquid soap and disinfectants. For standard bottles of 1 litre. Made of naturally anodized aluminium with fixing material.

Dim.:
95 x 210 x 290 mm (w x d x h)

Ref. no.

20248

Drip tray

separately, removable, to clip on the dispenser (ref. no. 20200).

Ref. no.

16256

Drip tray

separately, removable, to clip on the sensor dispenser (ref. no. 20248).

Ref. no.

16256

Waste containers / Organisation systems / Injection set / KOMBI set / Disposal boxes

Waste container for instruments



with polypropylene bowl, can be sterilized up to 134° C, white, with mount.

Dim.:
300 x 230 x 130 mm (w x d x h)

with slit lid

Ref. no.

13912

without slit lid

Ref. no.

13960

Waste container



with s/s bowl, Ø 320 mm and attachment device for the profile.

Ref. no.

13911

Organisation system



for cart 63

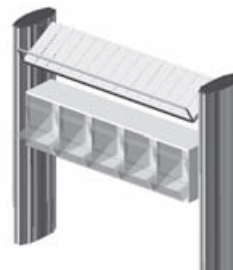
with 2 special steel tilted deposit levels, stainless steel and 10 moveable clips for conventional material packages.

Dim. of the tilted deposit levels:
630 x 150 x 65 mm (w x d x h)

Ref. no.

20149

Organisation system with "PicBox"



for cart 63

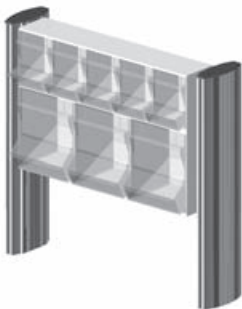
consisting of the "PicBox" canula dispenser with 5 small boxes and 1 special tilted deposit level, stainless steel and 5 moveable clips.

Dim. of the canula dispenser:
600 x 175 x 165 mm (w x d x h)

Ref. no.

20118

Injection set "PicBox"



for cart 63

The dispenser with **first-in/first-out guarantee** in accordance with DIN 58953. The boxes are replenished from the top, the material is taken from below. Grey-white plastic casing with transparent acrylic glass boxes. Each box with a separate covering lid. Consisting of syringe dispenser (3 boxes) and canula dispenser (5 boxes).

Dim.:
600 x 220 x 410 mm (w x d x h)

Ref. no.

20090

KOMBI set



Recommended for taking blood samples and giving injections. Consisting of "TAKEFIX" swab dispenser, "TIPPFIX" swab moisturiser and additional container. All parts are made of unbreakable plastic, grey-white.

Dim.:
120 x 225 x 270 mm (w x d x h)

Ref. no.

13916

Disposal boxes "Medi-Müll" à 1.5 ltrs.



made of sunshine yellow polypropylene with HAEBERLE-green lid. Offers 3 practical ways for the disposal of all types of canulas and vacuum containers. Ideally suited for scalpels, pipettes, broken glass, swabs etc.

Height 152 mm, Ø Lid 143 mm, Ø base 108 mm

Set à 20 boxes and mounting.

Ref. no.

20190

Carton à 100 boxes, without mounting.

Ref. no.

16653

Holder



separately for "Medi-Müll"

Ref. no.

20232

Container for canulas / Ampoule opener / Holders / Holders for dispenser boxes / Catheter container / Arm support

Container for canulas "Schluckfix"



Disposable container for approx. 500 used canulas, made of black recycled plastic. Bulk discounts on request.

Dim.:
55 x 100 x 170 mm (w x d x h)

Set with 20 boxes and holder.

Ref. no.

20170

Ampoule opener "CUPFIX"



with grey-white plastic casing. Receptacle for used ampoules, removable. Diamond file is spring-loaded in a stainless steel casing.

Dim.:
70 x 150 x 180 mm (w x d x h)

Ref. no.

20210

Original carton with 100 boxes, without holder

Ref. no.

09490

Spare diamond file

for "CUPFIX" ampoule opener

Ref. no.

04663

Holder

separately for "Schluckfix"

Ref. no.

20180

Holder

separately for "CUPFIX"

Ref. no.

20233

Holder for dispenser boxes



made of stainless steel, brushed. Suitable for common dispenser boxes of disposable gloves or tissues, incl. mounting material for **toro**.

Holder 1-fold (for 1 box)
Inner dim.: 142 x 94 x 250 mm (w x d x h)

Ref. no.

20297

Holder 3-fold (for 3 boxes)
Inner dim.: 253 x 94 x 394 mm (w x d x h)

Ref. no.

20298

Holder 4-fold (for 4 boxes)
Inner dim.: 253 x 94 x 525 mm (w x d x h)

Ref. no.

05072

Holder for 3 dispenser boxes



transverse-version, made of stainless steel, polished. Suitable for common dispenser boxes of disposable gloves or tissues. Mountable between 2 **toro** carrier profiles.

for **cart 63**

External dim.: 700 x 152 x 144 mm (w x d x h)
Inner dim.: 700 x 94 x 142 mm (w x d x h)

Ref. no.

18340

Catheter container



made of s/s, 3 compartments, for hanging on standard profile rail.

Dim.:
160 x 96 x 560 mm (w x d x h)

Ref. no.

20234

Please also order the standard profile rail, ref. no. 20080 on page 14.

Arm support



extra sturdy, black. Padded with integral upholstered foam, with 2 attachment devices.

Ref. no.

13923

Universal holder / Stability corners / Holders for oxygen bottles / Clip-holder / Holder for Kensington lock / Multiple socket outlet

Universal holder "Snap"

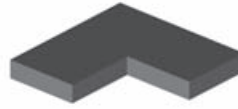


made of white plastic for boxes of disposable gloves, tissues or wipes. Attachment for **toro** included. The spring-loaded clamp is adjustable to fit many box sizes up to about 1 kg; for single handed operation.

Ref. no.

15606

Stability corners



Set of 4 stability corners, made of black cellular rubber, adhesive on one side. For securing the devices when the cart is moved.

Dim.: 40 x 40 x 5 mm (w x d x h)

Ref. no.

17222

Holder



for oxygen bottle à 5/10 ltrs., Ø up to 145 mm. Upper holder and fixing tape included, powder-coated, white-aluminium (RAL 9006). For fastening to the carrier profile.

Ref. no.

20236

Holder



for oxygen bottle of 2 ltrs., upper supporting ring Ø 102 mm, lower supporting ring Ø 84 mm, white-aluminium (RAL 9006). For mounting on the carrier profile.

Ref. no.

20060

Additional upper holder

separately with flexible holding strap.

Ref. no.

20237

Clip-holder



for securing cables, made of grey plastic. Fastening in the profile grooves.

Ref. no.

19015

Holder for Kensington lock



for preventing the theft of notebooks for mounting on the profile. Lock is not included.

Ref. no.

16424

Multiple socket outlet, standard



4 grounding sockets, light-grey cable (3 m long) with moulded grounding plug, green 2-pin switch, quality housing anodised aluminium, 2 grey plastic fastening angles included. Further multiple socket outlets you will find in the separate electrical accessories list.

Dim.: 269 x 44 x 44 mm (w x d x h)

Ref. no.

21695

Electrical accessories

Suitable for the equipment cart systems, we offer you a comprehensive range of electrical accessories in various country-specific versions.

The product range contains:

- Standard multiple socket outlets
- Modular multiple socket outlets
- Central on/off switch
- Isolating transformers
- Equipotential bonding system MultiContact POAG
- Electrical connections according to IEC 320 C13/C14
- Cable management and plug-out protection

On request we send you the separate list with information about the electrical accessories. Please feel free to contact our customer consultants.

All prices are understood exclusive of VAT. As an innovative company we reserve the right to amend prices and designs. As for the rest our General Terms of Business in the valid version apply.

WEEE-Reg.-no. DE 20235235



Cable duct horizontal arm



45 63

toro

Horizontal arm



45 63

toro

Chassis



45 63

toro

Castors Ø125 mm
Load capacity
up to 130 kg

Castors Ø150 mm
Load capacity
up to 250 kg

Extra charge for 4
electrically conductive castors

Height of the carrier column



standard

668 mm

1052 mm

1308 mm

1820 mm

variable

0 - 636 mm

700 - 1020 mm

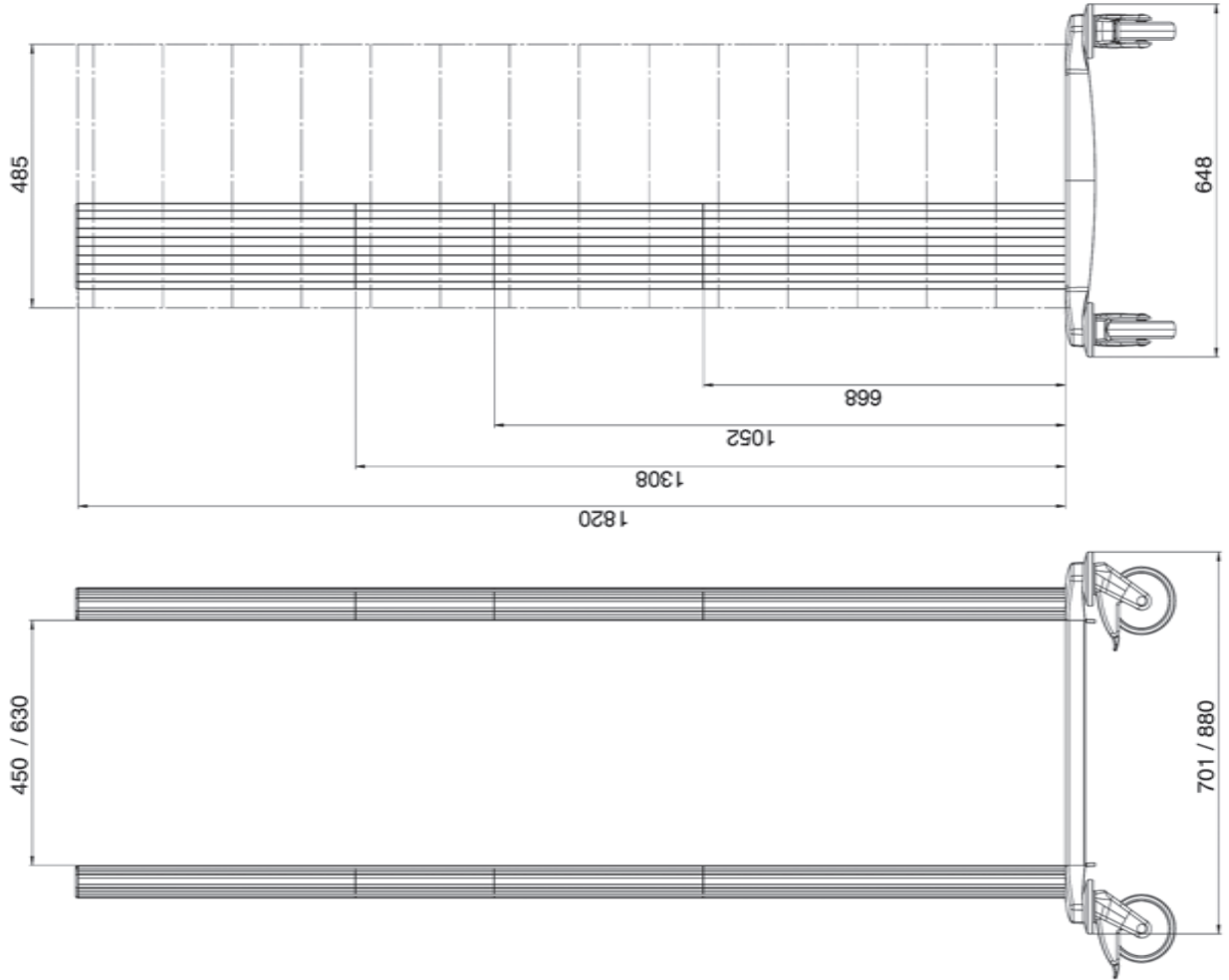
1084 - 1266 mm

1340 - 1820 mm

(grids = 32 mm)

For optimal stability each toro cart with
carrier unit up from 668 mm has to be
equipped with one horizontal arm or
with a cable duct horizontal arm

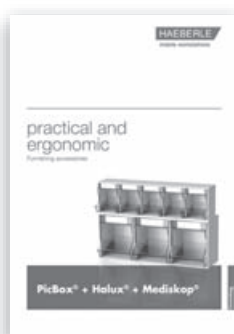
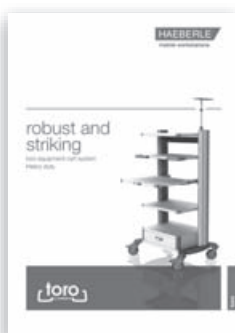
Notes:



HAEBERLE

mobile workstations

Our versatile product range



Your medical distributor

HAEBERLE GmbH + Co. KG

Breitwiesenstr. 13, DE-70565 Stuttgart

P.O.Box 800524, DE-70505 Stuttgart

Phone +49 (0) 711/78314-0

Fax +49 (0) 711/78314-77

info@haeberle-med.de

www.haerberle-med.de

Version 07/19