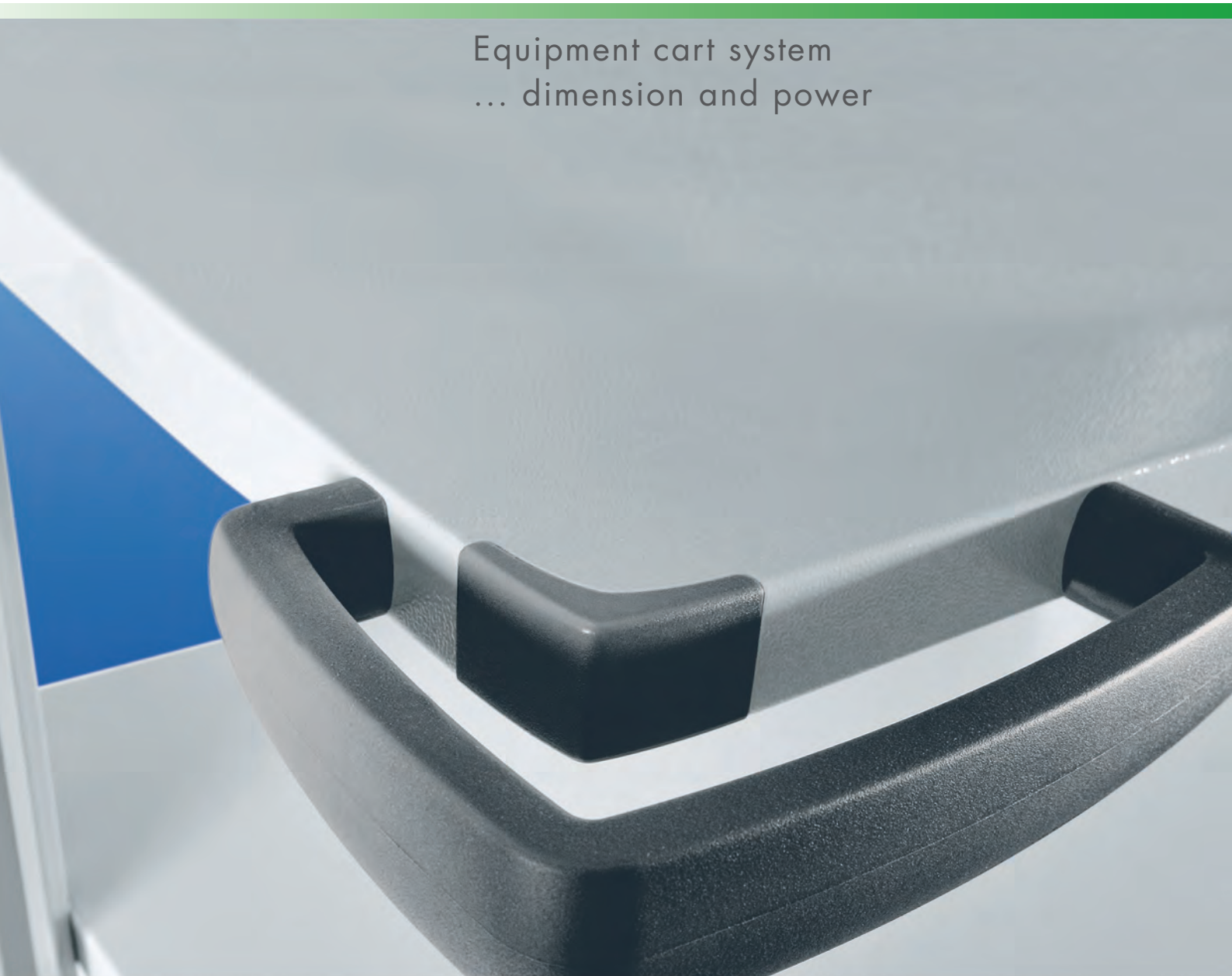


HAEBERLE

multifunctional cart systems



Equipment cart system
... dimension and power



The system parts

- All toro equipment carts include the following as standard: extremely strong chassis, 4 quality 125 mm dia. castors with integrated thread guard and wall guards, 2 castors are lockable.
- High-grade aluminium carrier unit including profile cover and decorative strips, in a choice of grey or blue.
- Tough, disinfectant-resistant metal shelves, 45 or 63 cm wide with rounded grey decorative corners.
- Soft self-closing drawers with ball castor bearing guide rails and a practical grey handle with label window.
- Elegant and striking grey push handles. 2 or 4 push handles can be mounted on a cart.
- Cable duct horizontal arm for the optimal management of up to 6 cables or a socket board.
- Pull-out shelf for storing equipment or a keyboard.

toro - the robust equipment cart system by HAEBERLE - since 1933 the specialist in the development of innovative cart systems for the medical sector.

The modular toro equipment cart system features a beautiful design, stability and functionality and can be retrofitted with additional components.

toro is a logically-designed, variable equipment cart system for the storing of compact medical or electronic devices.

With its high-grade metal shelves, rounded decorative corners and high-grade aluminium profile, the toro equipment cart system comes ready-to-use in clinics and doctor's surgeries.

toro is practical for everyday purposes, is built to last and meets the strict hygiene requirements of clinics.

toro also offers a range of optional system parts and accessories, which are listed in the price list.

All equipment carts are delivered assembled.

The toro system allows models to be customised, the fulfilment of specific requirements and even offers the choice of special colours.

Ask us. We would be happy to advise you.
Phone +49 (0) 711/78314-0

Basis cart / Equipment carts



toro 63 basis cart
► Ref. no. 20482



toro 45 equipment cart 1
► Ref. no. 20781



toro 45 equipment cart 2
► Ref. no. 20282

equipment cart system

Computer carts



toro 63 computer cart 1
▶ Ref. no. 20752



toro 63 computer cart 3
▶ Ref. no. 20812



toro 63 computer cart 4
▶ Ref. no. 20832

Endoscopy carts



toro 63 endoscopy cart 2
▶ Ref. no. 20561



toro 63 endoscopy cart 3
▶ Ref. no. 20852



toro 45 endoscopy cart 4
▶ Ref. no. 20861

Ergometry cart / Emergency cart / Anaesthesia cart



toro 45 ergometry cart
▶ Ref. no. 20372



toro 63 emergency cart
▶ Ref. no. 20732
+ cardiac massage board

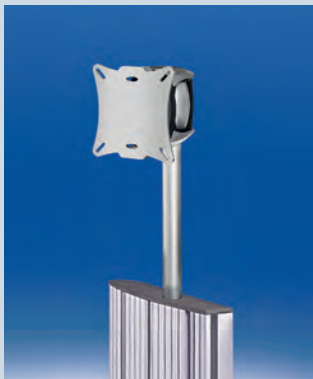


toro 63 anaesthesia cart
▶ Ref. no. 20741

alegro – Monitor carrier system

with comfortable positioning versatility for single monitors, as well as for double monitoring. With the ingenious and simple adjusting mechanism alegro allows you a quickly, steplessly and precisely monitor adaption without any exertion. On the profile with rod adapter, on aluminium-traverse, on swivel arm or on articulated arms.

alegro is horizontally and vertically rotatable, tiltable, pivotable and laterally slidable.



alegro monitor holder on rod adapter.

Ideal operability.
Horizontally and vertically rotatable, tiltable and pivotable.

Load capacity up to 12 kg
► Ref. no. 25010

Load capacity up to 18 kg
► Ref. no. 25034



alegro holder for double monitoring on horizontal arm

Optimum, simple, synchronous positioning of 2 monitors.
Horizontally slidable, tiltable and pivotable.

Load capacity up to 2 x 12 kg
► Ref. no. 25067

Load capacity up to 2 x 18 kg
► Ref. no. 25068



alegro monitor holder on swivel arm with one hinge joint

Infinitely variable, effortless and exact fixing. Horizontally and vertically rotatable, tiltable and pivotable. Reach 300 mm.

Load capacity up to 12 kg
► Ref. no. 25025

Load capacity up to 18 kg
► Ref. no. 25051



alegro monitor holder on swivel arm with two hinge joints and integrated cable duct

horizontally and vertically rotatable, tiltable and pivotable.
Reach 300 mm.

Load capacity up to 12 kg
► Ref. no. 25021

Load capacity up to 18 kg
► Ref. no. 25047



alegro monitor holder on articulated arm

with fastener on the outside or inside of the carrier profile. Integrated cable guide. Horizontally and vertically rotatable, tiltable and pivotable.
Reach 300 mm.

Load capacity up to 12 kg
► Ref. no. 25011

Load capacity up to 18 kg
► Ref. no. 25037



alegro monitor holder on double articulated arm

with fastener on the outside or inside of the carrier profile and integrated cable duct.
Reach 2 x 150 mm.

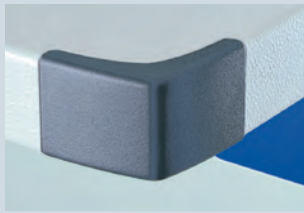
Load capacity up to 12 kg
► Ref. no. 25012

Load capacity up to 18 kg
► Ref. no. 25038

Special-purpose solutions

- for heavier monitors on request. Please contact us. Phone +49 (0) 711/78314-0

The alegro monitor carrier system is protected nationally and internationally by design and utility model patents.
Design: fuchs design, Stuttgart, www.fuchsdesign.biz



Rounded decorative corners



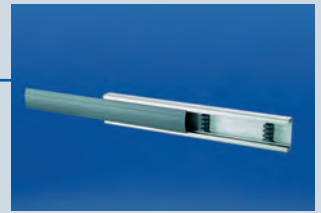
Elegant and striking grey push handle



Extremely strong chassis with 4 quality 125 mm dia. castors



toro 45 endoscopy cart 1
▶ Ref. no. 20292



Cable duct with movable holders



Decorative strips in grey or blue



Drawer handle with label window

Important dimensions

- ▶ Standard profile heights: 668 / 1052 / 1308 mm
Customised heights available on request
- ▶ Cart outer dimensions: Width 701 / 880 mm
Depth 648 mm
Height 876 / 1260 / 1516 mm
- ▶ Shelf outer dimensions: W 450 x D 485 x H 30 mm
W 630 x D 485 x H 30 mm
- ▶ Drawer outer dimensions: W 450 x D 487 x H 128 mm
W 630 x D 487 x H 128 mm
- ▶ High-quality, easy-run castors: 4 castors with integrated thread guard and wall guards, 2 castors are lockable.
Dia. 125 mm as standard, dia. 150 mm optional.

New in the range:

Undercarriage isolation transformers for mounting under the chassis.
For detailed technical information, please refer to the price list of electrical accessories.

Design: fuchs design, Stuttgart, www.fuchsdesign.biz



Piccolo waste collector

Sheet steel, aluminium colour or stainless steel, 1 roll of bags included. Lid optional
 ▶ Ref. no. 20198, alu
 ▶ Ref. no. 20199, s/s



Bowl for waste

Stainless steel, dia. 300 mm
 ▶ Ref. no. 13911



Drawer inset

with variable partitions
 ▶ Ref. no. 16722 (toro 45)
 ▶ Ref. no. 16721 (toro 63)



Medi-Müll disposal box 1.5 litres

Set à 20 boxes and holder
 ▶ Ref. no. 20190



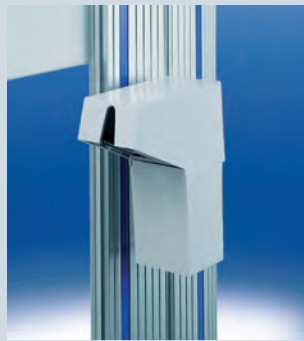
Soap and disinfectant dispenser 1 litre

with drip pan
 ▶ Ref. no. 20200 + 16256



LaptopSafe

without mousepad
 ▶ Ref. no. 19596
 with mousepad
 ▶ Ref. no. 19730



CUPFIX ampoule opener

made of plastic, grey white with diamond file
 ▶ Ref. no. 20210



Cable duct horizontal arm

with movable holders
 ▶ Ref. no. 20119 (toro 45)
 ▶ Ref. no. 20136 (toro 63)



Multiple standard socket outlet

4-fold, standard
 ▶ Ref. no. 21695



Infusion bottle holder

chrome-plated with 4 hooks
 ▶ Ref. no. 20197



Holder for oxygen bottle 5/10 litres

▶ Ref. no. 20236



Undercarriage isolating transformer

1000 VA with insulation guard
 ▶ Ref. no. 20437 (toro 45 / 63)

For other system components and accessories, please refer to the price list.

Your medical distributor

HAEBERLE GmbH + Co. KG

Breitwiesenstr. 13

DE-70565 Stuttgart

P.O.Box 800524 . DE-70505 Stuttgart

Phone +49 (0) 711/78314-0

Fax +49 (0) 711/78314-77

Email: info@haeberle-med.de

Internet: www.haerberle-med.de