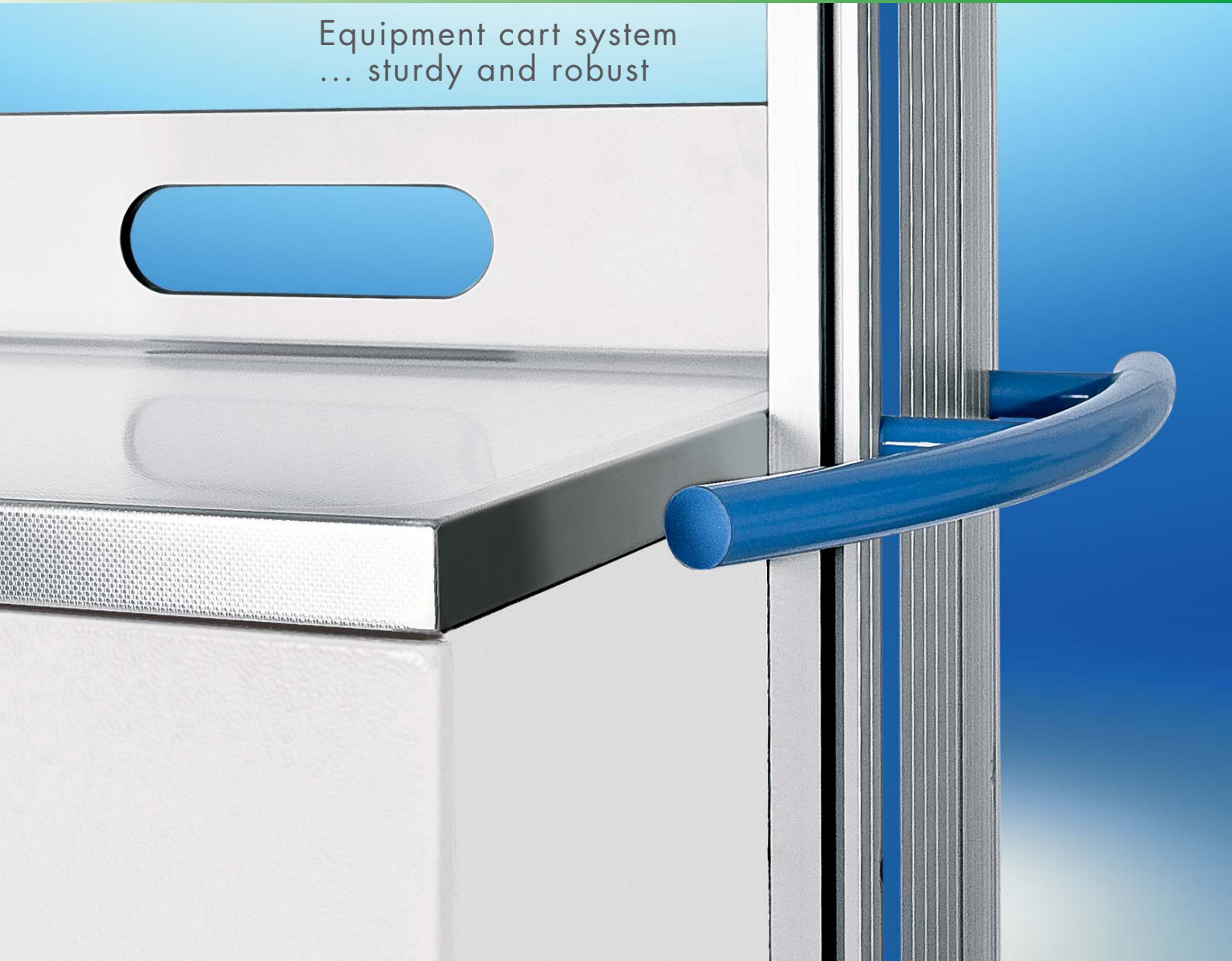


HAEBERLE

multifunctional medical
cart systems ...and more

SWINGO® + SWINGO® -clinic

Equipment cart system
... sturdy and robust



- ▶ Basic cart
- ▶ Ultrasonic cart
- ▶ Equipment tower
- ▶ Computer cart
- ▶ Double monitoring PC cart
- ▶ Standing desk
- ▶ Ergometry cart
- ▶ Endoscopy cart
- ▶ Emergency cart
- ▶ Injection cart
- ▶ Anaesthesia cart
- ▶ Gynaecology cart
- ▶ Nursing cart
- ▶ Low height cart

Here are some examples of our modular and practice approved function carts for different fields of application:

The equipment cart system swingo® or swingo®-clinic offers for high-quality medical devices optimal and safe accommodation. The elegant and very stable aluminum carrier profile with 4 fastening points takes plates and accessories to its exact position. The integrated cable duct keeps cables optimally.

The modular system with practice approved components offers an open-end range of individual equipment options. All carts are available in **wood/plastic** or in **metal version** with recent decorative colors.

The mentioned ref. no. are without push handle and without decoration material. Please order push handle separately. Special models for device manufacturers are one of our specialties. Please ask us!

Basic cart / Ultrasonic cart / Equipment tower



swingo® 60
Basic cart
wood-plastic version
▶ Ref. no. 13012



swingo® 45
Ultrasonic cart
wood-plastic version
▶ Ref. no. 15855



swingo® 45
Equipment tower
wood-plastic version
▶ Ref. no. 13882

Computer cart / Double monitoring PC cart / Standing desk



swingo® 60
Computer cart
wood-plastic version
▶ Ref. no. 13633



swingo®-clinic 60
Double monitoring PC cart
metal version
▶ Ref. no. 16471



swingo® 60
Standing desk
wood-plastic version
▶ Ref. no. 13352

plates 45 and 60 cm wide

Ergometry cart / Endoscopy cart / Emergency cart



swingo® 60
Ergometry cart
wood-plastic version
▶ Ref. no. 13333



swingo®-clinic 45
Endoscopy cart
metal version
▶ Ref. no. 13082



swingo®-clinic 60
Emergency cart II + accessories
metal version
▶ Ref. no. 13422

Injection cart / Anaesthesia cart



swingo® 60
Injection cart PicBox® Plus
wood-plastic version
▶ Ref. no. 13322



swingo® 60
Injection cart COMPACT
wood-plastic version
▶ Ref. no. 13311



swingo®-clinic 60
Anaesthesia cart
metal version
▶ Ref. no. 13443

Gynaecology cart / Nursing cart / Low height cart



swingo® 60
Gynaecology cart
wood-plastic version
▶ Ref. no. 13344



swingo® 60
Nursing cart
wood-plastic version
▶ Ref. no. 13651



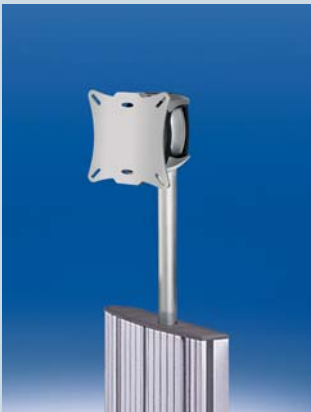
swingo® 60
Low height cart
wood-plastic version
▶ Ref. no. 13111 + 2x 13101

NEW

alegro – Monitor carrier system

with comfortable positioning versatility for single monitors, as well as for double monitoring. With the ingenious and simple adjusting mechanism alegro allows you a quickly, steplessly and precisely monitor adaption without any exertion. On the profile with rod adapter, on aluminium-traverse, on swivel arm or on articulated arms.

alegro is horizontally and vertically rotatable, tiltable, pivotable and laterally slidable.



alegro monitor holder on rod adapter.

Ideal operability.
Horizontally and vertically
rotatable, tiltable and pivotable.

Load capacity up to 12 kg
► Ref. no. 25023

Load capacity up to 18 kg
► Ref. no. 25049



alegro holder for double monitoring

Optimum, simple, synchronous
positioning of 2 monitors.
Horizontally slidable, tiltable
and pivotable.

Load capacity up to 2 x 12 kg
► Ref. no. 25003

Load capacity up to 2 x 18 kg
► Ref. no. 25029



alegro monitor holder on swivel arm with one hinge joint

Infinitely variable, effortless and exact
fixing. Horizontally and vertically
rotatable, tiltable and pivotable. Reach: 300 mm

Load capacity up to 12 kg
► Ref. no. 25024

Load capacity up to 18 kg
► Ref. no. 25050



alegro monitor holder on swivel arm with two hinge joints and integrated cable duct

horizontally and vertically
rotatable, tiltable and pivotable.
Reach: 300 mm.

Load capacity up to 12 kg
► Ref. no. 25020

Load capacity up to 18 kg
► Ref. no. 25046



alegro monitor holder on articulated arm

with fastener on the outside
or inside of the carrier profile. Integrated
cable duct. Horizontally and vertically
rotatable, tiltable and pivotable.
Reach: 300 mm

Load capacity up to 12 kg
► Ref. no. 25013

Load capacity up to 18 kg
► Ref. no. 25039



alegro monitor holder on double articulated arm

with fastener on the outside
or inside of the carrier profile
and integrated cable duct.
Reach: 2 x 150 mm

Load capacity up to 12 kg
► Ref. no. 25014

Load capacity up to 18 kg
► Ref. no. 25040

Special-purpose solutions

- for heavier monitors on request. Please contact us. Phone +49 (0) 711/78314-0

The alegro monitor carrier system is protected nationally and internationally by design and utility model patents.
Design: fuchs design, Stuttgart, www.fuchsdesign.biz

- ▶ Carts in wood/plastic version have a load capacity up to 120 kg. The sturdy, non-twisting metal construction guarantees high load capacity (130 kg or 250 kg).
- ▶ The trays and drawers are made of galvanized, high-quality plated steel sheet. They are resistant against disinfectants, easy to clean and non-fade. Color: easy-clean grey-white, RAL 9002.
- ▶ All trays are 22 mm strong and very stable. They are fixed twice on two sides preventing unwelcome inclination of the trays caused by high loading.
- ▶ The strong aluminum carrier unit offers limitless possibilities for fixing system parts and all kinds of accessories.
- ▶ The integrated cable duct inside the profiles keeps cables safe and tidy.
- ▶ Drawers with modern, fully extensible telescopic guides assure high handling comfort. The front of the drawers can be easily removed for cleaning.
- ▶ High-quality, smooth-action castors in three sizes (Ø 100, Ø 125 or Ø 150 mm) guarantee easy manoeuvrability of the cart even when fully loaded.
- ▶ The elegant design and vibrant colours give the trolleys a distinctive appearance. The handles and decorative strips are available in 5 stylish colours: grey, blue, red violet, yellow and turquoise.

swingo®-60

The perfectly designed cart system in attractive wood-plastic combination with tray width 600 mm.

swingo®-45

The carrier system in wood-plastic version with the ideal shape for narrow device combinations with tray width 450 mm.

swingo®-60-clinic

The elegant very sturdy cart system in metal version with tray width 600 mm.

swingo®-45-clinic

The slim and stable cart system in metal version with tray width 450 mm.

Configure yourself with few steps your individual function cart:

The chassis

- ▶ Choose the base, for:
 - tray width 600 mm
 - tray width 450 mm

The castors

- ▶ Choose the size of castors:
 - Ø 100 mm, load capacity 130 kg
 - Ø 125 mm, load capacity 130 kg
 - Ø 150 mm, load capacity 250 kg



Absolutely smooth, with or without brakes, also electrically conductive.

The profile with integrated cable duct

- ▶ Choose the height:
 - Standard heights 645, 957, 1218 mm or individual height



The colors

- ▶ Choose your favorite color for handles and decorative strips. Please specify the colour code by adding it as the last digit to the ref. no.



▶ xxxx.1
grey



▶ xxxx.2
blue



▶ xxxx.3
red violet



▶ xxxx.4
yellow



▶ xxxx.5
turquoise

Other color combinations on request

Accessories and others

- ▶ Various accessories you will find in the price list or ask us.

New in the range:

Undercarriage isolation transformers mounted under the chassis of swingo®-clinic 60. For detailed technical information please refer to the price list of electrical accessories.



Piccolo waste collector

Sheet metal, aluminium colour or stainless steel.
Also with lid available
► Ref. no. 13908, alu
► Ref. no. 13909, s/s



**Disposal box 1.5 ltr.
Medi-Müll set à 20 boxes**
► Ref. no. 13919



Injection set PicBox®Plus
► Ref. no. 13915 + 13916



Infusion bottle holder
► Ref. no. 13927



CUPFIX ampoule opener
plastic, grey white
► Ref. no. 13921



Cardiac massage board
with fast-fix-holder
► Ref. no. 13948



Lateral shelf, foldable
► Ref. no. 13996 (swingo® 45 or 60)
► Ref. no. 13997 (swingo®-clinic 45 or 60)



Bowl for waste
Stainless steel
► Ref. no. 13911



**Schluckfix canula
container set à 20 boxes
with attachment**
► Ref. no. 13917



Cable and hose holder
Reach approx. 950 mm
► Ref. no. 13926



Rear panel
► Ref. no. 16105 (swingo® or swingo®-clinic 45)
► Ref. no. 14714 (swingo® or swingo®-clinic 60)



**Drawer inset with
variable partitions**
► Ref. no. 16719 (swingo® 60)
► Ref. no. 16721 (swingo®-clinic 60)



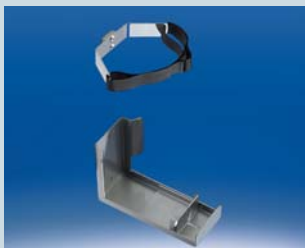
Tray, extensible
► Ref. no. 16712 (swingo®-clinic 45)
► Ref. no. 16703 (swingo®-clinic 60)



**Multiple standard
socket outlet**
► Ref. no. 21693



Undercarriage isolating transformer
► Ref. no. 16727 (swingo®-clinic 60)



**Holder for
oxygen bottle 5/10 ltrs.**
► Ref. no. 16322

Your medical distributor

HAEBERLE GmbH + Co. KG

multifunctional medical
cart systems ...and more

Breitwiesenstr. 13
DE-70565 Stuttgart
P.O.Box 800524 . DE-70505 Stuttgart
Phone +49 (0) 711/78314-0
Fax +49 (0) 711/78314-77
Email: info@haeberle-med.de
Internet: www.haerberle-med.de