



endo-cart



THE SPECIALIST WHERE LOTS OF SPACE IS NEEDED

endo-cart was designed especially to meet the special challenges in operating theatres. This is where every second counts and each movement must be correct. Particularly in the case of

- ERCP investigations
- Diagnostic endoscopy and
- Surgical endoscopy

endo-cart impresses with the high level of stability, functional perfection, exceptional load rating and comprehensive technical equipment.





Technical data

88

Ordering data **endo-cart**

90

THE IDEAL PLATFORM FOR YOUR SOLUTIONS



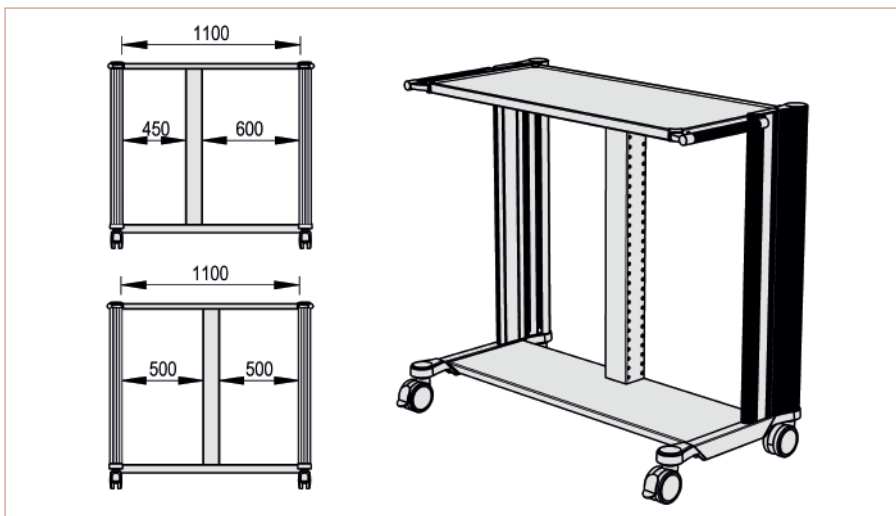
The **extended vertical extrusion** and a corresponding standard runner offer the opportunity to attach accessories while saving space.



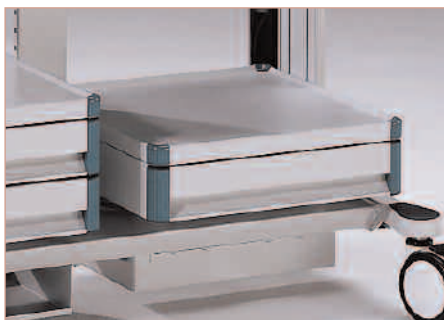
The **centre column** connects the lower assembly with upper shelf and offers additional stability.



The continuous upper platform 1100 mm in width offers **lots of storage space** for technical medical equipment.



The **cart width** can be defined **symmetrically** (500 mm / 500 mm) or **asymmetrically** (450 mm / 600 mm or 600 mm / 450 mm).



The **isolating transformer** is integrated underneath the crosspiece of the basic frame to save space and provide protection.

endo-cart impresses in every detail

Perfect functionality

- **endo-cart** offers a total width of 1100 mm. This provides large storage areas offering adequate space for comprehensive space for accommodating extensive, application-specific equipment.
- The cart width can optionally be divided in two ways:
 - ➔ The symmetrical version defines the cart width in 500 mm / 500 mm.
 - ➔ The asymmetrical version divides the cart width into 450 mm / 600 mm or 600 mm / 450 mm.
- The standard basic frame with extended vertical extrusions is recommended if additional assemblies are required.
- The basic frame is exceptionally robust and accommodates a payload of up to 150 kg / 330 lbs.

Safe power supply

- The centre column can also be used as a cable channel.
- The spacious power columns offer:
 - ➔ Accommodation of socket strips over the entire length of the extrusion.
 - ➔ Virtually invisible cabling.
 - ➔ Separate routing of data lines and power cables
- A central on / off switch can be optionally accommodated in the power column. The switch is clearly visible, accessible at any time and protected.



THE MODULAR SYSTEM FOR INDIVIDUAL SOLUTIONS

The modular structure is the defining feature of the entire ITD product range. It allows all support systems to be configured, upgraded or modified for specialist functions and application areas. This capability allows users to react fast and consistently to any changes or new customer requirements.

The display presented alongside shows a small selection of system components and accessories for the **endo-cart** equipment carts which are primarily used for endoscopy. The entire accessories range with extensive descriptions and ordering information is presented in a user-friendly format from page 94.





1 Medical consumer material can be stored transparently in **multipurpose boxes**.



2 Optionally installed **rear panels** provide protection against unauthorized access.



3 **Endoscope holders** can be accommodated in the vertical extrusions or attached to the shelf with two mounts.

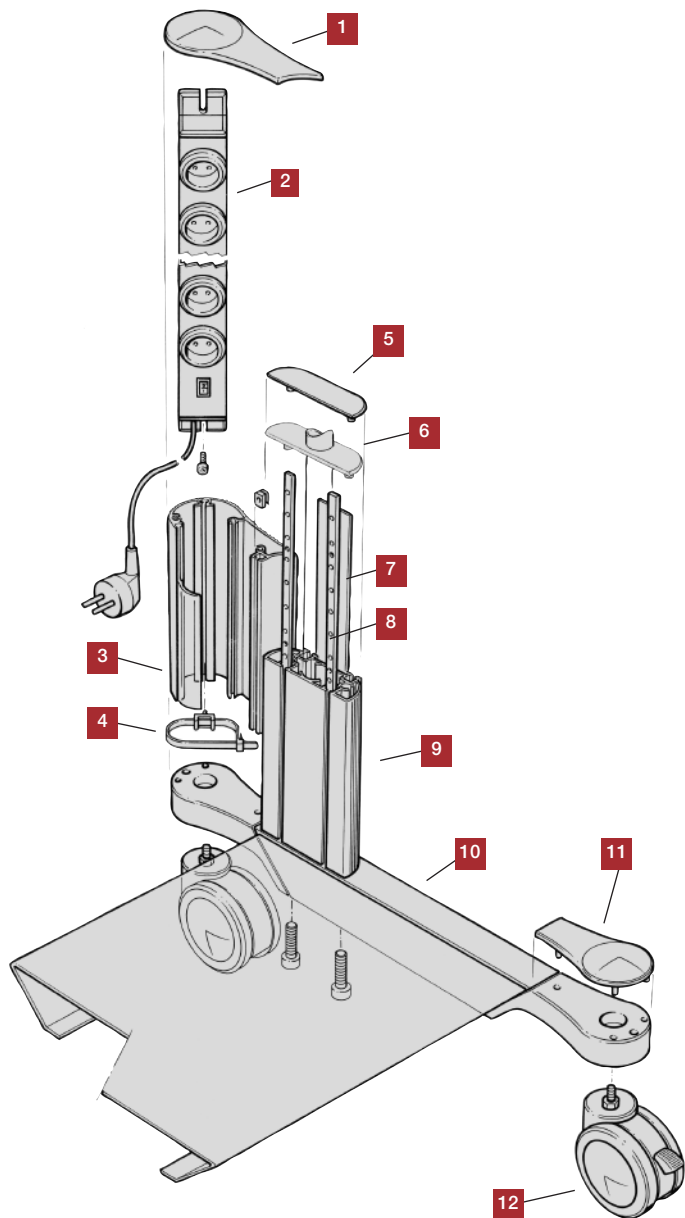


4 A range of accessories, such as **foot switch shelf** or **foot switch cradle** can be easily attached to the equipment cart.

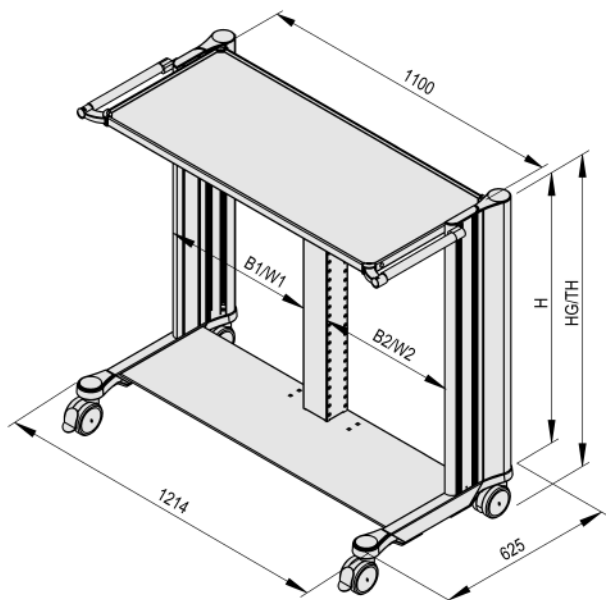
For an overview of system components and accessories, see page

92

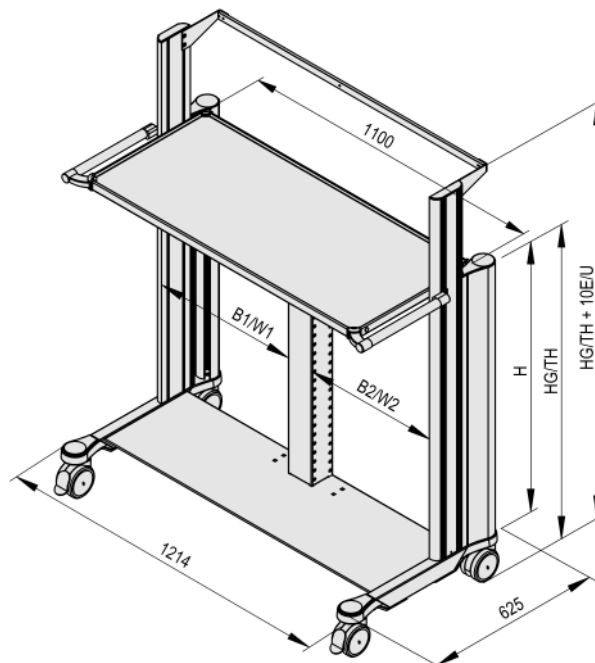
DESIGN ELEMENTS AND DIMENSIONS



- 1** Cap of the power column made of plastic (ABS)
- 2** Socket strip, for assembly in the power column
- 3** Power column (made of extruded aluminium)
- 4** Cable tie
- 5** Cap of the vertical extrusion made of plastic (ABS)
- 6** Cap of the vertical extrusion made of plastic (ABS) with hole (Ø25 mm), is used with accessories in the guide
- 7** Decorative trim (made of sheet steel), in RAL 5021 (Water Blue), RAL 5013 (Cobalt Blue) or RAL 7035 (Light Grey), powder-coated
- 8** Tapped strip (made of sheet steel) for mounting all system components in the cart interior (tapped holes M6 in increments of 32 mm)
- 9** Vertical extrusion (made of extruded aluminium), in RAL 7035 Light Grey, powder-coated
- 10** Base (made of sheet steel) with stabilizers (made of cast aluminium)
- 11** Cap of the stabilizer (made of plastic)
- 12** Twin swivel castors with Ø 100 mm or Ø 125 mm, two with wheel locks, optionally also supplied in conductive version



Basic frame Type 1



Basic frame Type 2 with extended vertical extrusion

	Installation width W	Width division W1 / W2 in mm	Installation height H	TH for Castors Ø 100 mm	TH for Castors Ø 125 mm
Type 1	1100 mm	500/500; 450/600; 600/450	30 U ¹⁾	1117 mm	1145 mm
Type 2	1100 mm	500/500; 450/600; 600/450	30 U ¹⁾ + 10 U ¹⁾	1437 mm	1465 mm

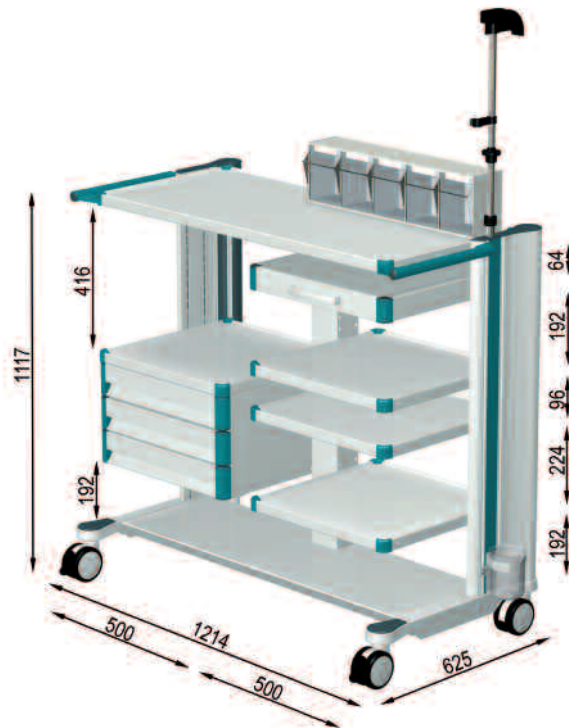
Load capacity

■ Basic frame total payload	150 kg / 330.0 lbs
■ Shelf	50 kg / 110.0 lbs
■ Shelf pullout	20 kg / 44.0 lbs
■ Drawer with lock	20 kg / 44.0 lbs
■ Drawer without lock	3 kg / 6.6 lbs

Setup

- 1 base
- 2 vertical extrusions each with two tapped strips (32 mm increments)
- 4 twin swivel castors with Ø 100 mm or Ø 125 mm, two with wheel locks. All sizes can also be supplied in a conductive version.
- 2 power columns, for use as cable ducts and for mounting socket strips
- 1 centre column, as additional cable duct and for mounting the system elements
- Supplied fully assembled

ORDER CONFIGURATIONS



endo-cart equipment cart, 30 U¹⁾

Order number: EC.0410.XXX²⁾

Basic frame **Type 1** 30 U¹⁾ fitted with:

- 4 twin swivel castors Ø 100 mm, conductive
2 with wheel locks
- 2 vertical extrusions each with 2 tapped strips
- 2 power columns as mounting for socket strip and cables
- 1 centre column as cable duct
- 2 decorative trims
- Continuous upper platform (W 1100 mm), each with a handle left and right
- 3-unit block of drawers (W 500 mm)
- 4 shelves (W 500 mm)
- 1 shelf pullout with mousepad (W 500 mm)
- 1 multipurpose box (5 boxes)
- 1 endoscope holder
- 1 drain glass
- 1 socket strip 6-way with switch

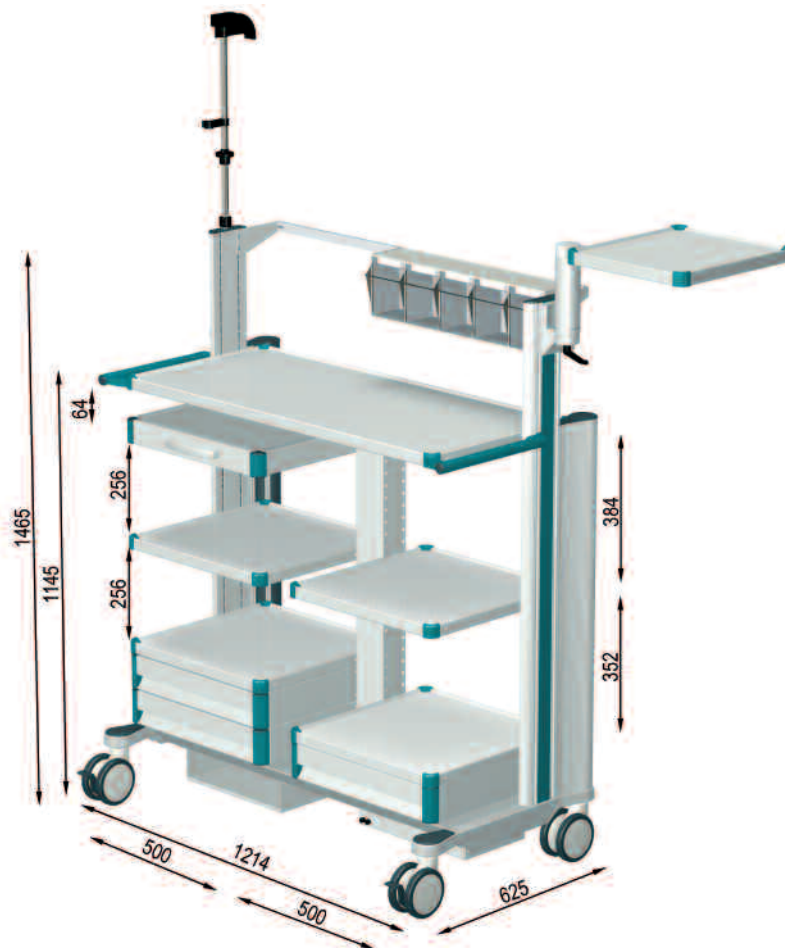
Load capacity: 150 kg / 330 lbs

Finish:

- RAL 7035 Light Grey powder-coated
- **Decorative trims and handles** see optionally ²⁾

¹⁾ 1 U = 32 mm

²⁾ **Trim colour:** Make sure you replace .XXX with .901 = RAL 5021 Water Blue, .902 = RAL 5013 Cobalt Blue, .903 = RAL 7035 Light Grey



endo-cart equipment cart, 30 U¹⁾

Order number: EC.0411.XXX²⁾

Basic frame **Type 2 with extended vertical extrusions** 30 U + 10 U¹⁾ fitted with:

- 4 twin swivel castors Ø 125 mm, conductive
2 with wheel locks
- 2 extended vertical extrusions each with 2 tapped strips
- 2 power columns as mounting for socket strips and cables
- 1 centre column as cable duct
- 2 decorative trims
continuous upper platform, (W 1100 mm) each with a handle left and right
- Standard runner (length 1100 mm) for mounting accessories
- 2-unit block of drawers (W 500 mm)
- 4 shelves (W 500 mm)
- 1 shelf pullout with mousepad (W 500 mm)
- 1 foot switch shelf
- 1 isolating transformer 1600 VA, incl. 8-way EURO socket strip, each with an equipotential plug, a fuse for each socket and a central on/off switch mounted in the right-hand power column
- 1 monitor arm
- 1 multipurpose box (5 boxes)
- 1 endoscope holder
- 1 drain glass
- 1 glove box holder

Load capacity: 150 kg / 330 lbs

Finish:

- RAL 7035 Light Grey powder-coated
- **Decorative trims and handles** see optionally ²⁾

¹⁾ 1 U = 32 mm

²⁾ **Trim colour:** Make sure you replace .XXX with .901 = RAL 5021 Water Blue, .902 = RAL 5013 Cobalt Blue, .903 = RAL 7035 Light Grey

OVERVIEW

SYSTEM COMPONENTS AND ACCESSORIES

Basic frames	symmetrical width division, 500 mm / 500 mm	30 U	EC.0400.XXX 1)		
	asymmetrical width division, 450 mm / 600 mm	30 U	EC.0402.XXX 1)		
	symmetrical width division, 600 mm / 450 mm	30 U	EC.0403.XXX 1)		
Basic frames with extended vertical extrusion	symmetrical width division, 500 mm / 500 mm	30 U + 10 U	EC.0401.XXX 1)		
	asymmetrical width division, 450 mm / 600 mm	30 U + 10 U	EC.0404.XXX 1)		
	asymmetrical width division, 600 mm / 450 mm	30 U + 10 U	EC.0405.XXX 1)		
Rear panel	symmetrical width division, 500 mm / 500 mm	30 U	GW.8050.991		
	asymmetrical width division, 450 mm / 600 mm	30 U	GW.8051.991		
Castor conversion kit	Ø 100 mm, conductive, instead of standard Ø 100 mm		ZV.9922.999		
	Ø 125 mm, conductive, instead of standard Ø 100 mm		ZV.9923.999		
	Ø 125 mm, conductive, instead of standard Ø 100 mm, conductive		ZV.9924.999		
Shelf		<i>for installation width</i>	<i>W 450</i>	<i>W 500</i>	<i>W 600</i>
	without handle		GW.4001.XXX	GW.5001.XXX	GW.6001.XXX 1)
	with handle		GW.4002.XXX	GW.5002.XXX	GW.6002.XXX 1)
	with mousepad		GW.4035.XXX	GW.5035.XXX	GW.6035.XXX 1)
	with mousepad and handle		GW.4049.XXX	GW.5049.XXX	GW.6049.XXX 1)
	pullout		GW.4040.XXX	GW.5040.XXX	GW.6040.XXX 1)
Keyboard pullout	without mousepad		GW.4034.XXX	GW.5034.XXX	GW.6034.XXX 1)
	with mousepad			GW.5036.XXX	GW.6036.XXX 1)
Side Shelf		<i>width</i>	<i>200 mm</i>	<i>300 mm</i>	
	right, depth 400 mm		GW.0238.XXX	GW.0248.XXX 1)	
	left, depth 400 mm		GW.0239.XXX	GW.0249.XXX 1)	
Computer holder	for mounting on inside of extrusion		GW.0709.991		
	for mounting on outside of extrusion		TS.6441.991		
Block of drawers		<i>for installation width</i>	<i>W 450</i>	<i>W 500</i>	<i>W 600</i>
	1 unit, 3 U high		GW.4051.XXX	GW.5051.XXX	GW.6051.XXX 1)
	1-unit, 6 U high		GW.4052.XXX	GW.5052.XXX	GW.6052.XXX 1)
Gallery		<i>for installation width</i>	<i>W 450</i>	<i>W 500</i>	<i>W 600</i>
	for shelf / drawer		ZV.9632.999	ZV.9633.999	ZV.9634.999
Endoscope holder	mounting in the vertical extrusion		<i>single</i>	<i>double</i>	
	for assembly on shelves		GW.0393.800	GW.0472.800	
			GW.0394.991	GW.0473.991	
Connector holder	for mounting up to 3 endoscope plugs		ZV.9833.999		
Hose holder			GW.9882.999		
Camera holder	assembly on the side of the shelf		GW.9990.999		
	with clamp		GW.9983.991		
	with mounting		GW.9808.991		
Cable holder	for safe and reliable mounting		GW.9807.991		
Gas bottle holder			GW.0800.991		
Bottle holder	for holding 1l rinsing bottle, Ø 120 mm		GW.0400.991		
	for holding 2l rinsing bottle, Ø 145 mm		GW.0401.991		
	for rinsing bottle (for mounting on the shelf)		GW.9805.999		

1) **Trim colour:** Make sure you replace .XXX durch .901 = RAL 5021 water-blue, .902 = RAL 5013 cobalt blue, .903 = RAL 7035 light grey

Gel bottle holder	for gas bottles with max. 2 l, for all equipment carts		GW.0466.991	
	for gas bottles with max. Ø 145 mm and 3 l / 5 l / 10 l		GW.0160.991	
	for gas bottles with max. Ø 145 mm and 20 l or 50 l		GW.0285.991	
Infusion stand	4-arm	with one-hand adjustment, 4 x 4,4 lbs	ZV.9882.800	
	4-arm	with one-hand adjustment, 4 x 11 lbs	ZV.9464.800	
Standard runner			GW.9801.991	
Anchor			ZV.9820.799	
Holder for suction system	assembly in the outer T-Slots	<i>Strässle/Ergoline</i>	<i>Hellige/KISS</i>	
		GW.0570.991	GW.0702.991	
	assembly in the power column	GW.0717.991		
Foot switch shelf / cradle	shelf in the crosspiece of the basic frame	ZV.9980.991		
	cradle on the side of the vertical extrusion	ZV.9991.991		
Holder for transducer			GW.0843.991	
Box holder	"Dracula" for single-use glove box		ZV.9832.999	
Pivot arm	single, VESA 75 / 100 for flat screens		TS.6063.991	
	double, VESA 75 / 100 for flat screens		TS.6064.991	
Variable height arm	length 400 mm	L 400 mm	ZV.9538.999	
	single	Load capacity 8 kg / 17,6 lbs	L 750 mm	
		Load capacity 10 - 13 kg / 22 - 28,6 lbs	L 750 mm	ZV.9724.999
	double	Load capacity 8 kg / 17,6 lbs	L 1190 mm	ZV.9740.999
		Load capacity 10 - 13 kg / 22 - 28,6 lbs	L 1190 mm	ZV.9721.999
Jointed arm	with hose clamps, e.g. for cable management		ZV.9955.799	
Socket strips	6-way EURO		ZV.9501.999	
	3-way earthed with switch		ZV.9977.999	
	6-fach earthed		ZV.9503.999	
	8-fach earthed		ZV.9504.999	
	8-fach earthed with switch		ZV.9502.999	
	8-way earthed with central on / off switch		ZV.9505.999	
	6-way, French Standard		ZV.9506.999	
Cable ducts for lateral cabeling	with cable winders		GW.0631.991	
Plug removal barriers			GW.0633.991	
Cable winders			FC.0253.991	
Isolating transformer		without insulation monitor	with insulation monitor	
	660 VA with 4-way EURO socket strip	ZV.9404.999	ZV.9405.999	
	1000 VA with 8-way EURO socket strip	ZV.9402.999	ZV.9403.999	
	1600 VA with 8-way EURO socket strip	ZV.9400.999	ZV.9401.999	

You will find a comprehensive description and ordering information on all components suitable for **endo-cart** in the **system components and accessories** section.

System components and accessories from page

94

Order number index from page

180